



Power of Desire



4th edition

PACKAGING DETAIL FOR GVT TILES

Nominal Size(mm)	Thickness(mm)	Average weight per carton (Kgs)	No. of tiles per carton	Coverage area per carton
600x600	8.5	28.50	4	1.44 Sq.mtr / 15.50 Sq.ft.

TECHNICAL SPECIFICATIONS FOR GVT TILES

Characteristics	Requirement as per IS 15622 :2017 0.08 < E ≤ 3% Group B1b	Requirement as per ISO 13006:2018 ≤ 0.5% Group B1a	Our Values	Test Method
A) Dimension & Surface Quality				
i) Length & Width	± 0.1%	± 0.3%	± 0.1%	IS 13630 Part 1/ ISO 10545-2
ii) Thickness	± 5.0%	± 5.0%	± 5.0%	
iii) Straightness of Side	± 0.1%	± 0.3%	± 0.1%	
iv) Rectangularity	± 0.1%	± 0.3%	± 0.1%	
v) Surface Flatness				
a) Center curvature (max.Deviation)	± 0.5%	± 0.4%	± 0.2%	
b) Edge curvature (max.Deviation)	± 0.5%	± 0.4%	± 0.2%	
c) Corner warpage (max.Deviation)	± 0.5%	± 0.4%	± 0.2%	
vi) Surface Quality	Min. 95 % of tiles will be free from visible defects	Min. 95 % of tiles will be free from visible defects	Min. 95 % of tiles will be free from visible defects	
B) Physical Properties				
i) Water Absorption %	Av. 0.08< E ≤ 3 %, Individual 3.3 max	Av ≤ 0.5 %, Individual 0.6% max	Av ≤ 0.5 %, Individual 0.6% max	IS 13630 Part 2/ ISO 10545-3
ii) Modulus of Rupture [N/mm ²]	Avg. 30, Individual 27 Min	Av 35, Individual 32 min	Avg. > 35	IS 13630 Part 6/ISO 10545-4
iii) Breaking Strength in N	1100 N	1300 N	Min. 1300	
iv) Moisture Expansion in mm/m	0.02	Test method available	0.02	IS 13630 Part 3/ISO-10545-10
v) Scratch Hardness of surface (Mohs)	Min 5	N.A.	Min.5	IS 13630 Part 13
vi) Resistance to Abrasion of Glazes Tiles (Class I to V)	Min II	Abrasion Class & Cycle passed	Class-V	IS 13630 Part 11 /ISO 10545-7
vii) Coefficient of linear thermal expansion from ambient temperature to 100° c	7 X 10 ⁻⁶ K ⁻¹ Max	Test method available	Max 6 X 10 ⁻⁶ K ⁻¹ Max	IS 13630 Part 4/ ISO 10545-8
viii) Thermal Shock Resistance	10 cycle min	Test method available	10 cycle Passed	IS 13630 Part 5/ISO-10545-9
ix) Crazeing Resistance	4 cycle @ 7.5bar min	Required	4 cycle passed	IS 13630 Part 9/ISO 10545-11
x) Impact Resistance as Co-efficient of Restitution (COR)	0.55 min	Required	Min 0.55	ISO 10545-5
xi) Frost Resistance	Required	Required	100 Cycle passed	IS 13630 Part 10/ISO 10545-12
C) Chemical Resistance (glazed Tiles)				
i) Stain Resistance	Min Class-1	Min Class-3	Min Class-1	IS 13630 Part 8 &/SO 10545-14
ii) Resistance to household chemicals	Min Class AA	Min Class GB	Min Class AA	IS 13630 Part 8/ ISO 10545-13
iii) Resistance to acids and alkalis (with exception of hydrofluoric acid and its compounds)	Required if agreed	Declared Value ^f	Min Class AA	



Somany Ceramics Limited : Noida: F-36, Sector-6; Ph.:0120-4627900.

Ahmedabad: Office no. 7-14, 4th Floor, Aggarwal Mall, Opp. Sola Bhagwat Vidyapeeth, S.G. Road, Sola, Ph.: 079-66042500 to 599

Registered office: 2, Red Cross Place, Kolkata - 700001; Ph.(033) 22487406/5913

www.somanyceramics.com | e-mail marketing@somanyceramics.com

Toll Free No. 1800-103-0004 (Timing-10:00am to 6:30pm; Mon-Fri)



Visit us at:
www.somanyceramics.com



Find us at:
www.facebook.com/SomanyCeramic



Find us at:
www.twitter.com/SomanyCeramic



Find us at:
www.instagram.com/SomanyCeramics



DURAGRES / CAT / JANUARY 2022

DURAGRES
Timeless Elegance

SOMANY
Tiles | Bathware

ZAMEEN SE JUDEY

NEW ARRIVAL

600x600mm

Rocken
series

UNIT-3
FOR ALL INDIA

FULLBODY VITRIFIED TILES

600 X 600MM - MATT FINISH

Get obsessed with
your space

DURAGRES
Timeless Elegance

Surface Features



Flame Proof



Low Water
Absorption



Frost Resistant



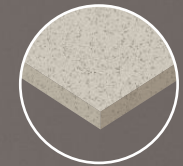
Easy To Clean



High Loads
Resistant



Chemical
Resistant



FULL BODY





Flame Proof



Low Water Absorption



Frost Resistant



Easy To Clean



High Loads Resistant

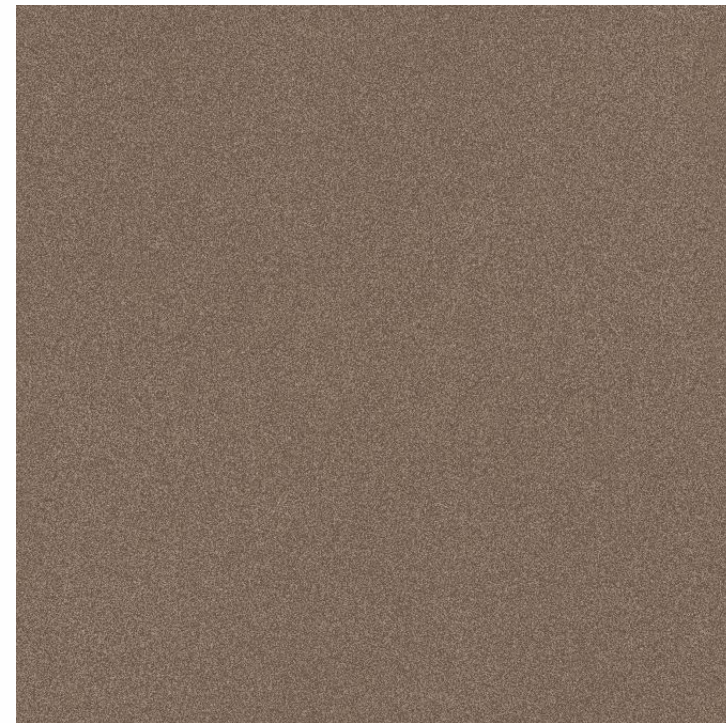


Chemical Resistant



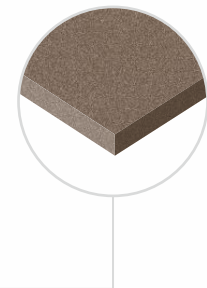
ROCKEN CREMA

600X600MM



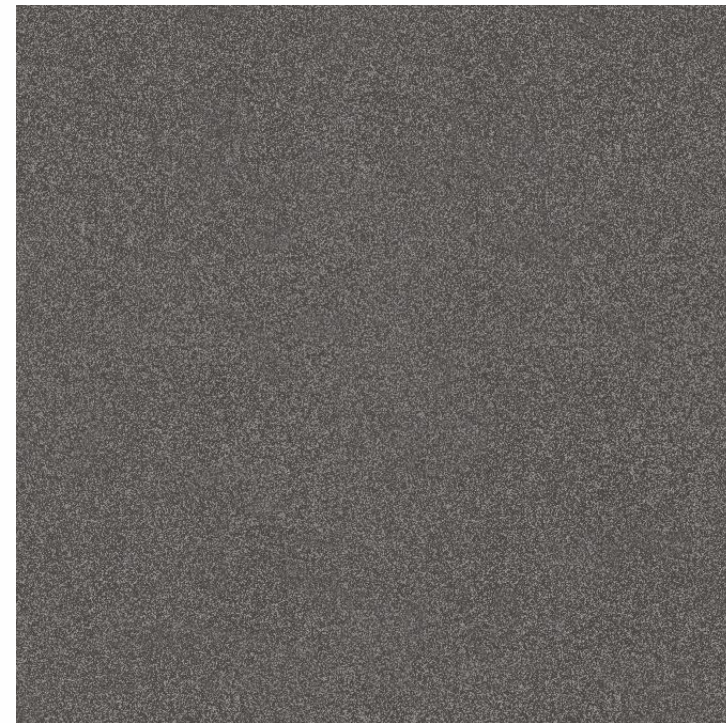
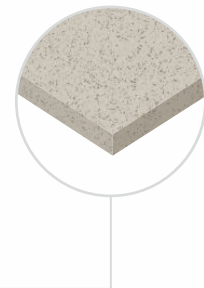
ROCKEN COPPER

600X600MM



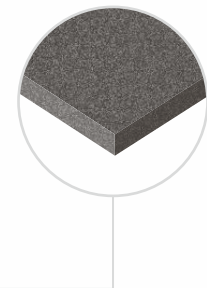
ROCKEN BIANCO

600X600MM



ROCKEN GREY DARK

600X600MM





Flame Proof



Low Water Absorption



Frost Resistant



Easy To Clean



High Loads Resistant

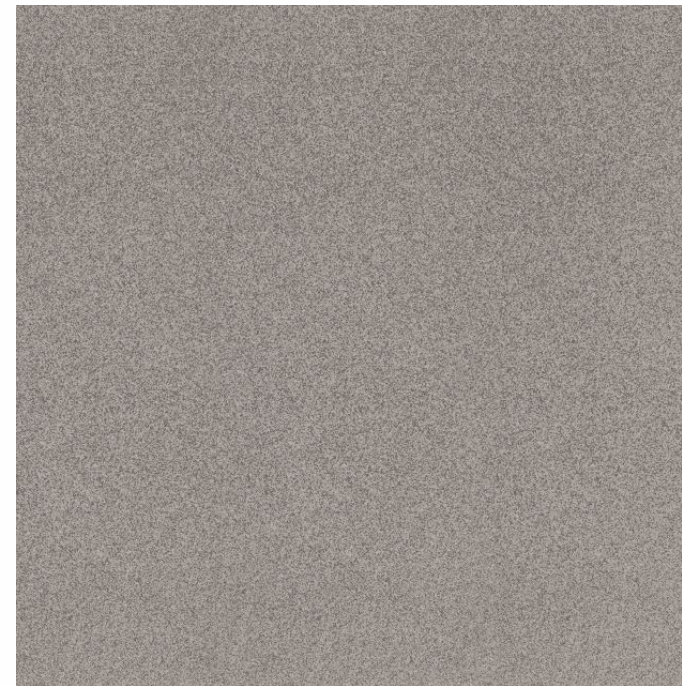
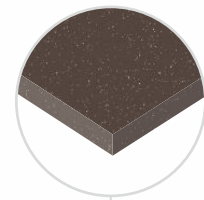


Chemical Resistant



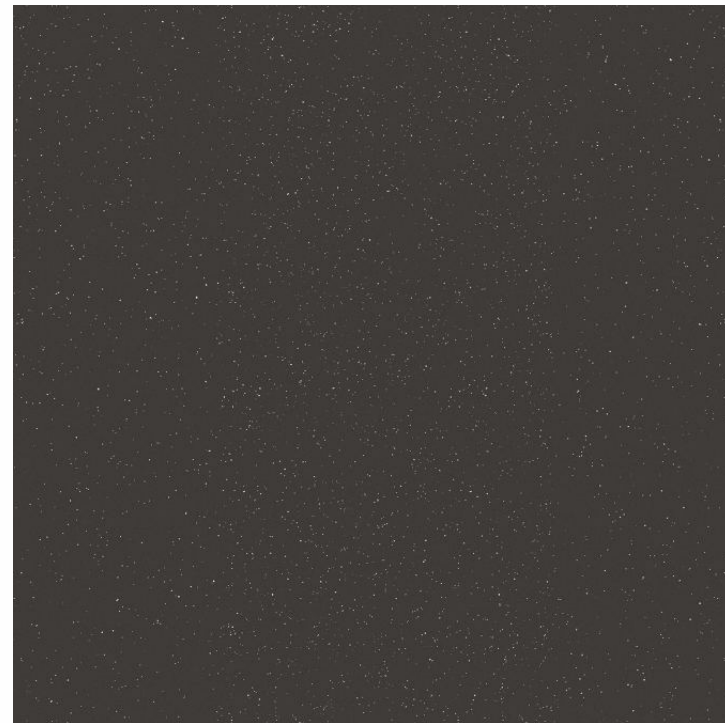
ROCKEN BROWN

600X600MM



ROCKEN GREY LIGHT

600X600MM



ROCKEN BLACK

600X600MM

