

# LUXORA

collection

1200x1800mm | 800x1600mm



**Somany Ceramics Limited**

**Corporate Office:** F-36, Sector-6, Noida-201301, Uttar Pradesh; Ph.: 0120-4627900

**Ahmedabad Office:** 601 to 606, 6<sup>th</sup> Floor, Aalps Euphoria, Opp. Adani CNG Pump, B/s. Gota Flyover, S.G. Highway, Ahmedabad-382481; Ph.: 079-27661103 & 04

**Registered Office:** 2, Red Cross Place, Kolkata-700001; Ph.: 033-22487406/5913

**www.somanyceramics.com | e-mail: customer.care@somanyceramics.com**

**Toll Free No. 1800-103-0004 (Timing-10:00 am to 6:30 pm; Mon-Fri)**

VITRO / CAT / MARCH - 2025

**SOMANY**

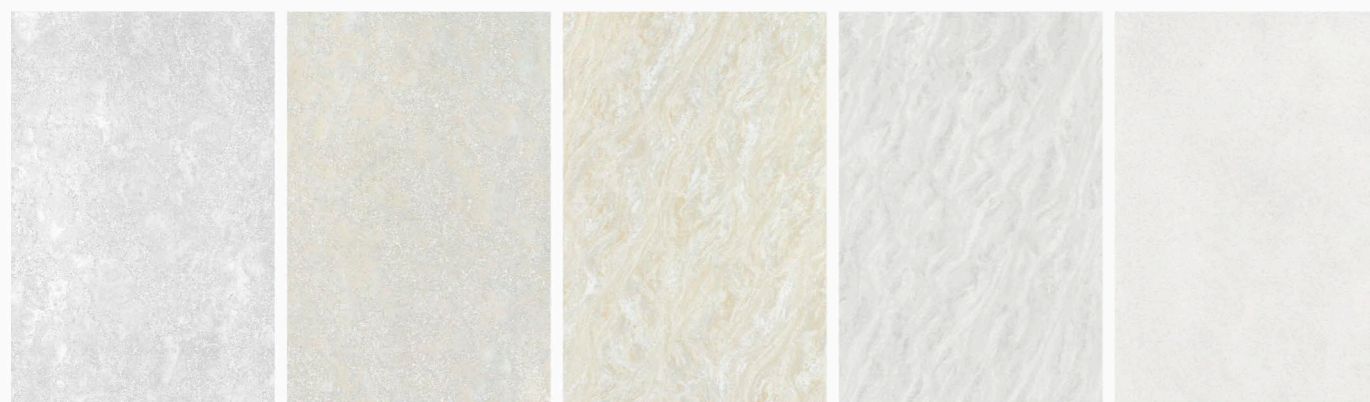


Discover the Timeless  
Elegance of  
Double Charged  
Vitrified Tiles  
1200x1800mm | 800x1600mm

**Create a luxurious and sophisticated ambience**

Let the shades of grey slate add an air of sophisticated class.

page no. <b>08</b> 1200x 1800mm	page no. <b>34</b> 800x 1600mm
--	---



LYRA WHITE  
1200x1800mm  
800x1600mm

LYRA CREMA  
1200x1800mm  
800x1600mm

NYOTA CREMA  
1200x1800mm  
800x1600mm

NYOTA WHITE  
1200x1800mm  
800x1600mm

CANIS WHITE  
1200x1800mm



ALTAIR WHITE  
1200x1800mm

RITZ WHITE  
800x1600mm

ACE WHITE  
800x1600mm

ARION ULTRA WHITE  
800x1600mm

ARION GREY  
800x1600mm

**10** Surfaces   **2** Size   **1** Finish

**Slated for Sophistication**



**DOUBLE CHARGE VITRIFIED TILE COLLECTION**

Designed to create a luxurious and sophisticated ambience, our Collection enhances the visual appeal of any space. With meticulously crafted tile designs, these tiles not only elevate the aesthetic but also increase the value of your property. Enjoy lasting beauty and performance for years.



Exquisite designs  
inspired by  
celestial icons

## DOUBLE CHARGE

VITRIFIED TILES

**You will be floored by  
the sophisticated beauty!**

This collection features double-charged vitrified technology, offering superior durability and stain resistance. With a diverse range of muted shades and patterns, it suits various aesthetics that exude sophistication. These tiles are easy to clean and maintain and perfect for residential and commercial spaces.

Size: 1200x1800mm, 800x1600mm | Finish: Full Polish

### Technical Features



SUITABLE FOR  
INDOOR AREAS



SUITABLE FOR  
LIGHT TRAFFIC AREAS



NANO  
TECHNOLOGY



RESISTANT TO  
LIQUID



RESISTANT TO  
HIGH TEMPERATURE



CHEMICAL AND  
STAIN RESISTANT



FROST  
RESISTANCE



HYGIENIC  
SURFACE



RESISTANT TO  
SCRATCHES



EASY TO  
CLEAN



IMPACT  
RESISTANT



RESISTANT TO  
UV RAYS

**DOUBLE  
CHARGE**  
VITRIFIED TILES

**ULTRA  
CHARGE**  
TECHNOLOGY

THE  
PERFECT TOUCH  
FOR A

*Wooden Aesthetic*



**SOMANY<sup>7</sup>**  
**VITRO**



**1200x  
1800mm**

**LUXORA  
COLLECTION**

Double charge vitrified tiles in the 1200x1800mm size are a premium choice for creating a spacious and seamless aesthetic. Manufactured with advanced technology, they feature a dual-layer pigment process, ensuring exceptional strength and vibrant designs.



NANO  
TECH



ANTI  
STAIN



HIGHLY  
DURABLE



ECO  
FRIENDLY



GLOSS  
FINISH

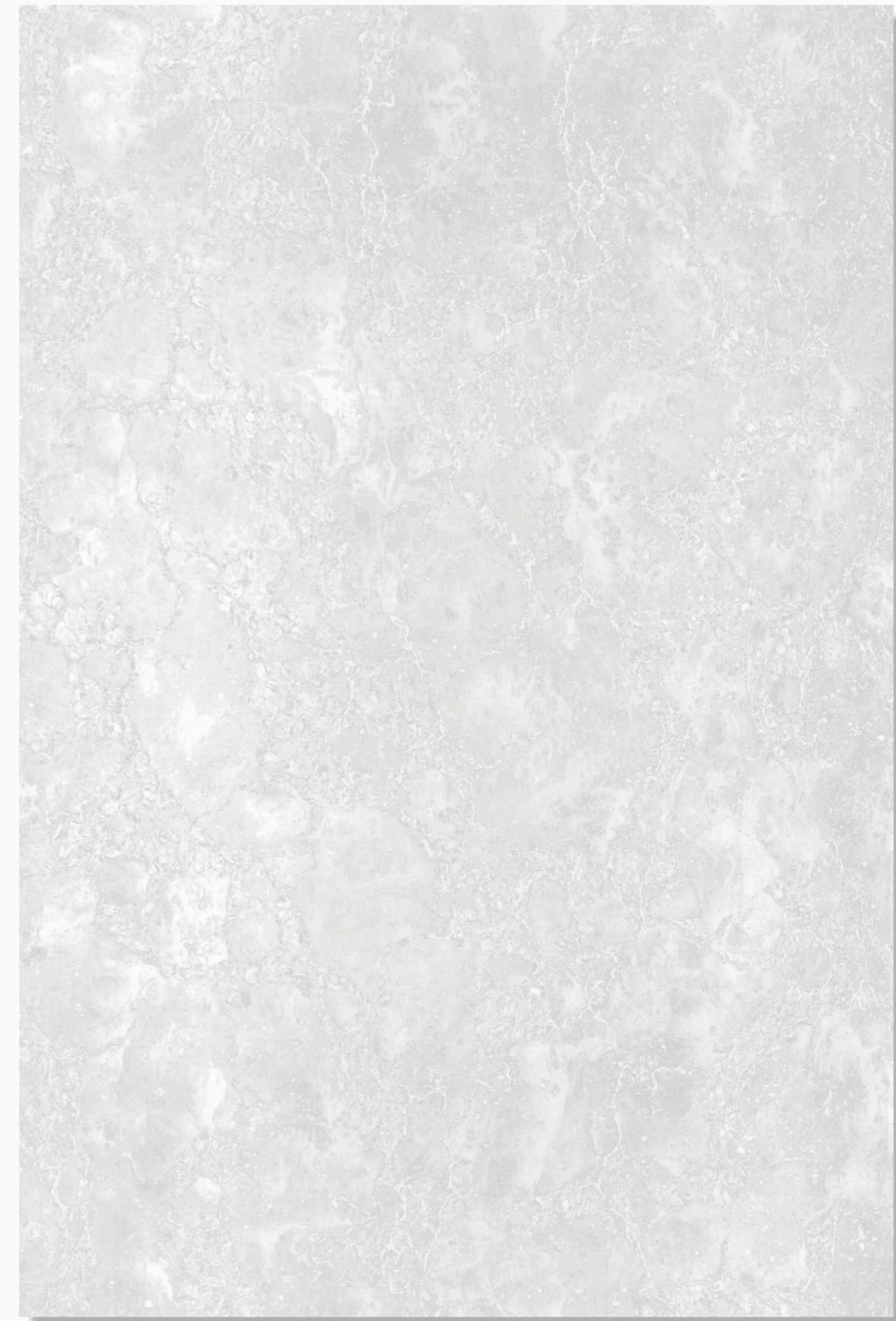


A CANVAS OF PURE WHITE,  
PURE LUXURY

LUXORA COLLECTION

SOMANY  
VITRO

-  NANO TECH
-  ANTI STAIN
-  HIGHLY DURABLE
-  ECO FRIENDLY
-  GLOSS FINISH



800x1600mm  
Available in  
same design



LYRA WHITE

Size: 1200x1800mm | Finish: Full Polish

DOUBLE  
CHARGE  
VITRIFIED TILES

ULTRA  
CHARGE  
TECHNOLOGY



SOMANY  
VITRO



**TIMELESS BEAUTY  
UNMATCHED STRENGTH**

LUXORA COLLECTION

SOMANY  
**VITRO**

-  NANO TECH
-  ANTI STAIN
-  HIGHLY DURABLE
-  ECO FRIENDLY
-  GLOSS FINISH



**800x1600mm**  
Available in  
same design



**LYRA CREMA**

Size: 1200x1800mm | Finish: Full Polish

**DOUBLE  
CHARGE**  
VITRIFIED TILES

**ULTRA  
CHARGE**  
TECHNOLOGY



SOMANY<sup>7</sup>  
VITRO



FEEL THE LUXURY  
BENEATH YOUR FEET

LUXORA COLLECTION

SOMANY  
VITRO

- NANO TECH
- ANTI STAIN
- HIGHLY DURABLE
- ECO FRIENDLY
- GLOSS FINISH



800x1600mm  
Available in  
same design



NYOTA WHITE

Size: 1200x1800mm | Finish: Full Polish

DOUBLE  
CHARGE  
VITRIFIED TILES

ULTRA  
CHARGE  
TECHNOLOGY



SOMANY  
VITRO



BUILT TO LAST,  
DESIGNED TO IMPRESS

LUXORA COLLECTION

SOMANY  
VITRO

-  NANO TECH
-  ANTI STAIN
-  HIGHLY DURABLE
-  ECO FRIENDLY
-  GLOSS FINISH



800x1600mm  
Available in  
same design



NYOTA CREMA

Size: 1200x1800mm | Finish: Full Polish

DOUBLE  
CHARGE  
VITRIFIED TILES

ULTRA  
CHARGE  
TECHNOLOGY



SOMANY  
VITRO



AMPLIFYING THE TIMELESS  
ELEGANCE OF WHITE

LUXORA COLLECTION

SOMANY  
VITRO

- NANO TECH
- ANTI STAIN
- HIGHLY DURABLE
- ECO FRIENDLY
- GLOSS FINISH



CANIS WHITE

Size: 1200x1800mm | Finish: Full Polish

DOUBLE  
CHARGE  
VITRIFIED TILES

ULTRA  
CHARGE  
TECHNOLOGY



SOMANY  
VITRO



A CELESTIAL EXPERIENCE,  
RIGHT IN YOUR SPACE

LUXORA COLLECTION

SOMANY  
VITRO



NANO  
TECH



ANTI  
STAIN



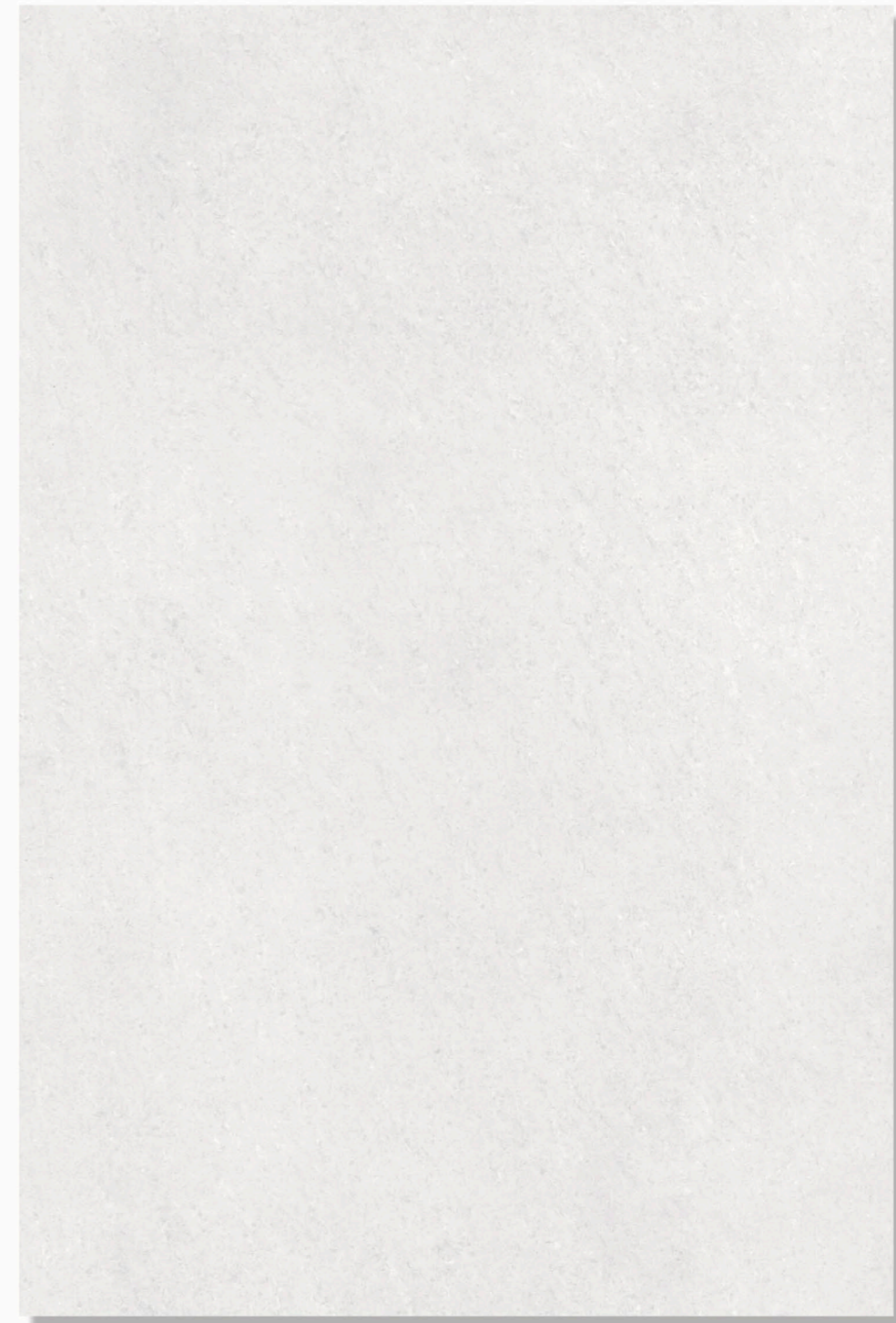
HIGHLY  
DURABLE



ECO  
FRIENDLY



GLOSS  
FINISH



ALTAIR WHITE

Size: 1200x1800mm | Finish: Full Polish

DOUBLE  
CHARGE  
VITRIFIED TILES

ULTRA  
CHARGE  
TECHNOLOGY



SOMANY  
VITRO

**DOUBLE  
CHARGE**  
VITRIFIED TILES

**ULTRA  
CHARGE**  
TECHNOLOGY

CREATE  
A MASTERPIECE  
WITH

*Glossy Tiles*



**SOMANY<sup>7</sup>**  
**VITRO**



**800x  
1600mm**

**LUXORA  
COLLECTION**

Double charge vitrified tiles are premium, durable tiles manufactured by infusing two layers of pigment during production, creating a strong and visually appealing surface. The 800x1600mm size is ideal for large spaces, offering a seamless and luxurious look.



**NANO  
TECH**   **ANTI  
STAIN**   **HIGHLY  
DURABLE**   **ECO  
FRIENDLY**   **GLOSS  
FINISH**



EXCEPTION STRENGTH  
WITH A TOUCH OF LUXURY

LUXORA COLLECTION

SOMANY  
VITRO

-  NANO TECH
-  ANTI STAIN
-  HIGHLY DURABLE
-  ECO FRIENDLY
-  GLOSS FINISH



1200x1800mm  
Available in  
same design



LYRA WHITE

Size: 800x1600mm | Finish: Full Polish

DOUBLE  
CHARGE  
VITRIFIED TILES

ULTRA  
CHARGE  
TECHNOLOGY



UNMATCHED DURABILITY,  
TIMELESS BEAUTY

LUXORA COLLECTION

SOMANY  
VITRO



NANO  
TECH



ANTI  
STAIN



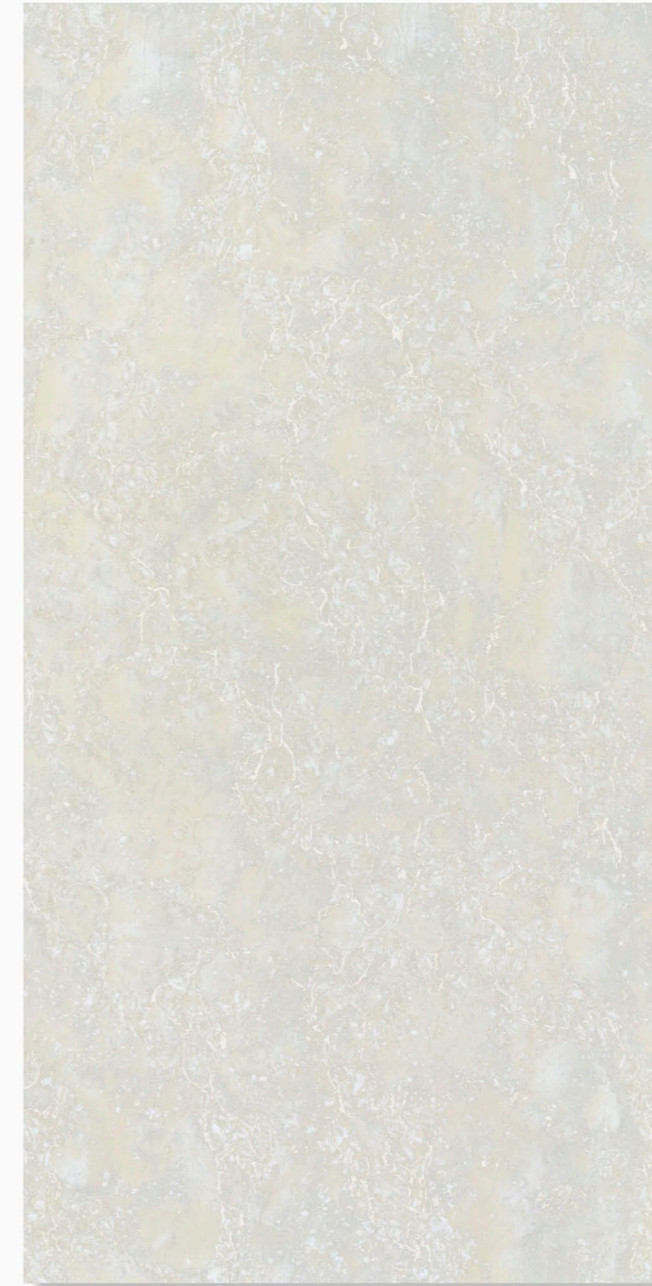
HIGHLY  
DURABLE



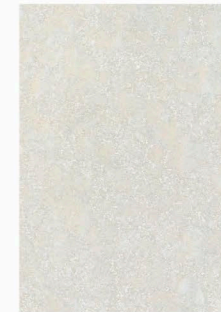
ECO  
FRIENDLY



GLOSS  
FINISH



1200x1800mm  
Available in  
same design



LYRA CREMA

Size: 800x1600mm | Finish: Full Polish

DOUBLE  
CHARGE  
VITRIFIED TILES

ULTRA  
CHARGE  
TECHNOLOGY



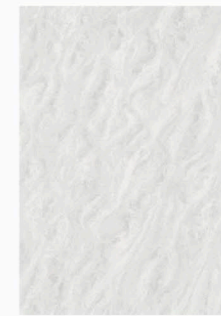
SHINE BRIGHT WITH  
FULL POLISH POWER!

LUXORA COLLECTION

SOMANY  
VITRO



1200x1800mm  
Available in  
same design



NYOTA WHITE

Size: 800x1600mm | Finish: Full Polish

DOUBLE  
CHARGE  
VITRIFIED TILES

ULTRA  
CHARGE  
TECHNOLOGY



WHERE DURABILITY  
MEETS ELEGANCE

LUXORA COLLECTION

SOMANY  
VITRO

-  NANO TECH
-  ANTI STAIN
-  HIGHLY DURABLE
-  ECO FRIENDLY
-  GLOSS FINISH



1200x1800mm  
Available in  
same design



NYOTA CREMA

Size: 800x1600mm | Finish: Full Polish

DOUBLE  
CHARGE  
VITRIFIED TILES

ULTRA  
CHARGE  
TECHNOLOGY



STYLE THAT SPARKLES,  
QUALITY THAT ENDURES

LUXORA COLLECTION

SOMANY  
VITRO

-  NANO TECH
-  ANTI STAIN
-  HIGHLY DURABLE
-  ECO FRIENDLY
-  GLOSS FINISH



## ARION ULTRA WHITE

Size: 800x1600mm | Finish: Full Polish

DOUBLE  
CHARGE  
VITRIFIED TILES

ULTRA  
CHARGE  
TECHNOLOGY



DOUBLE THE CHARM  
POLISH THAT DAZZLES!

LUXORA COLLECTION

SOMANY  
VITRO

-  NANO TECH
-  ANTI STAIN
-  HIGHLY DURABLE
-  ECO FRIENDLY
-  GLOSS FINISH



ARION GREY

Size: 800x1600mm | Finish: Full Polish

DOUBLE  
CHARGE  
VITRIFIED TILES

ULTRA  
CHARGE  
TECHNOLOGY



REFLECTING PERFECTION  
CRAFTED FOR LUXURY

LUXORA COLLECTION

SOMANY  
VITRO



NANO  
TECH



ANTI  
STAIN



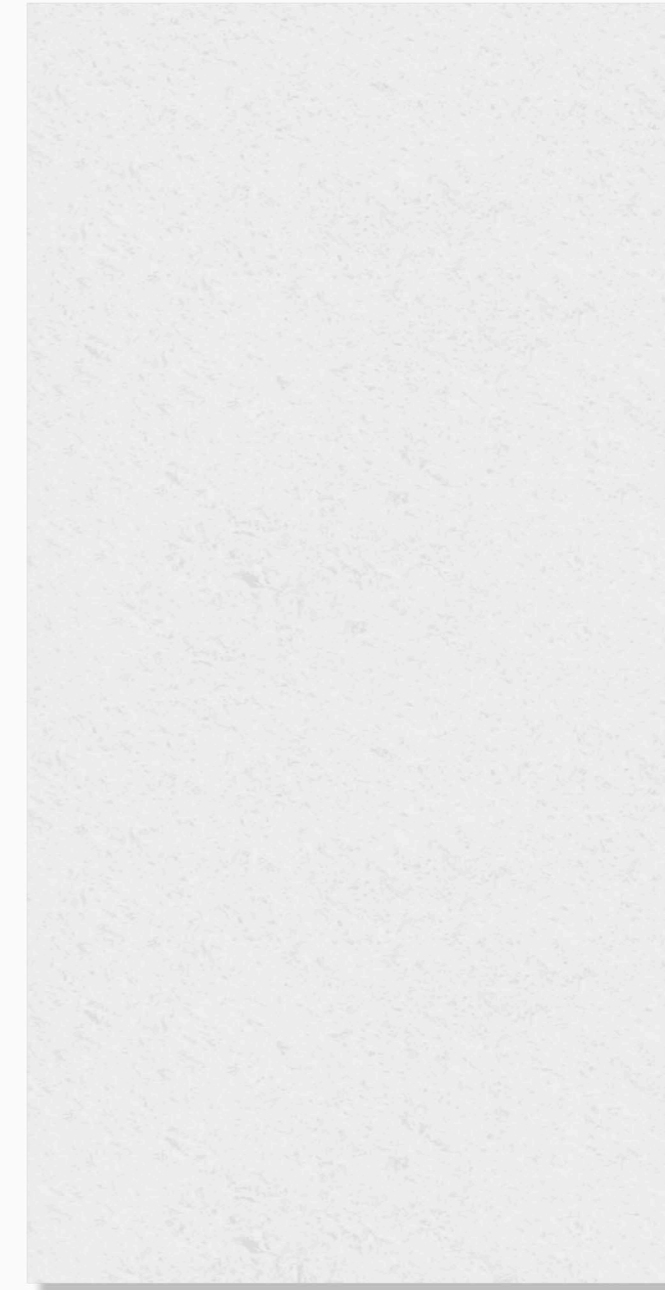
HIGHLY  
DURABLE



ECO  
FRIENDLY



GLOSS  
FINISH



ACE WHITE

Size: 800x1600mm | Finish: Full Polish

DOUBLE  
CHARGE  
VITRIFIED TILES

ULTRA  
CHARGE  
TECHNOLOGY



ELEVATE YOUR SPACE  
WITH DOUBLE CHARGE BRILLIANCE.

LUXORA COLLECTION

SOMANY  
VITRO



NANO  
TECH



ANTI  
STAIN



HIGHLY  
DURABLE



ECO  
FRIENDLY



GLOSS  
FINISH



RITZ WHITE

Size: 800x1600mm | Finish: Full Polish

DOUBLE  
CHARGE  
VITRIFIED TILES

ULTRA  
CHARGE  
TECHNOLOGY



# SOMANY<sup>®</sup> Ezy Fix

Tile Adhesive | Epoxy Grout | Cement Polymer Grout | PU Adhesive | Grout Admix | Tile Cleaner



## Lasting Bonds Made Ezy

Behind Every Stunning Tile, there's a Stronger Bond!  
Experience the power of reliable tiling with Somany EZY Fix. From ceramic and porcelain tiles to natural stone and marble, our adhesives work on all surfaces – walls, floors, indoors, outdoors, and facades. Available in cement-based and PU-based options, they offer strong adhesion across all sizes and materials. Complementing this, our cement and epoxy grouts ensure tight, durable joints that last. No matter the project, Somany EZY Fix delivers a bond that's built to last.



For detailed instructions scan the QR code

# SOMANY<sup>®</sup> Bathware

# SOMANY French Collection



Water Closets : Jazz Plus Wall Hung | Shower control : Elysees Single Lever Diverter and Wall Spout Chrome | Shower : Diamante Overhead Shower with arm Chrome  
Allied Products : Grace Health Faucet and Giza Paper Holder Chrome | Tiles used - Wall & Floor Area : Lumiere Beige 180 Engravo MT | Shower Area : Colorato Bianco 180 Grit



EASY TO USE



HIGH STRENGTH  
POLYMER MODIFIED  
ADHESIVE



WIDE APPLICATION  
RANGE



HIGHLY  
FLEXIBLE



SUITABLE FOR  
WET WALL  
SURFACES

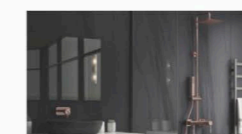


SELF - CURING  
ADHESIVE



SUITABLE FOR  
TILE ON TILE  
APPLICATION

To know more visit at [www.somanyceramics.com](http://www.somanyceramics.com) or call on Toll Free: 1800 103 0004



Water Closets | Basins | Faucets | Showers | Water Heaters | Accessories

Toll Free: 1800-103-0004 | [www.somanyceramics.com](http://www.somanyceramics.com)