

SOMANY

Ezy Fix

TILE ADHESIVES & GROUTS

STRONG & STEADY

BUILT TO LAST

EZY FIX ADHESIVE FIXES FAST



SOMANY
TILES | BATHWARE

SOMANY CERAMICS LIMITED

Corporate Office: F-36, Sector-6, Noida-201301, Uttar Pradesh. Ph.: 0120-4627900

Registered Office: 2, Red Cross Place, Kolkata-700001. Ph.: 033-22487406/5913

Ahmedabad Office: 601 to 606, 6th Floor, Aalps Euphoria, Opp. Adani CNG Pump, B/S. Gota Flyover, S G Highway, Ahmedabad - 382481.

Ph.: 7303597773 & 7303597774

Email ID: customer.care@somanyceramics.com | **Website:** www.somanyceramics.com

Toll Free No.: 1800-103-0004 (Time: 09:30AM to 06:30PM; Monday-Saturday)

- TILE ADHESIVE • EPOXY GROUT • CEMENT POLYMER GROUT
- PU ADHESIVE • GROUT ADMIX • TILE CLEANER

Available on:



Follow us on:





GRIHA Council

This is to certify that the products of

“SOMANY CERAMICS LIMITED”

**Somany Ezy Fix and Somany Ezy Grout
(under typology Adhesives)**

have been included in the GRIHA Product Catalogue under the following categories:

GRIHA v.2/3 criterion: 26;

GRIHA v.2015 criterion: 13

&

GRIHA v.2019 criterion: 12

The products can be used in GRIHA & SVAGRIHA registered projects to meet the GRIHA & SVAGRIHA norms, respectively. This is valid only for the products which have been mentioned above.

The certificate for the above mentioned product is valid from
4th April 2022 – 3rd April 2024

Sanjay Seth
Chief Executive Officer

Note: This evaluation has been done based on the documentation - in the form of 3rd party test results and/or declarations - submitted by the manufacturer to GRIHA Council.

GRIHA Council is a joint initiative of Ministry of New and Renewable Energy, Government of India and The Energy and Resources Institute (TERI) to implement GRIHA (Green Rating for Integrated Habitat Assessment), India's National Rating System for Sustainable Habitats.
www.grihaindia.org

COMPANY AND BUSINESS BACKGROUND

Somany Ceramics Limited, is a pioneer in the tile & ceramic industry and an internationally acclaimed organization recognized as a leader in design & innovation. SOMANY is one of the largest and fastest growing tiles brand globally, with exporting it's products in over 55 countries.

As a leading player in the ceramic industry in India, the company is a complete solution provider in terms of décor solutions with widest product range - Ceramic Wall and Floor Tiles, Polished Vitrified Tiles, Glazed Vitrified Tiles, Sanitaryware and Bath Fittings.

In addition to being a pioneer in tiles, SOMANY places great importance on offering comprehensive one stop solution. This commitment led us to introduce EzyFix®, a division specializing in Adhesive & Grouts. Our extensive selection of high-quality products includes Tile Adhesives, Epoxy and Cement-based grouts, admixtures, and tile cleaners, providing consumers with a convenient solution for their tile laying needs.

SOMANY
Tiles | Bathware

SOMANY

Ezy Fix

GLASS MOSAIC TILE ADHESIVE

EN 12004:C2TES1

IS 15477:2019 : Type 3 TS1

SOMANY Ezy Fix Glass Mosaic tile adhesive is a premium water resistant, high performance polymer modified cementitious wall tile adhesive, specially formulated for fixing glass mosaic tiles, granite and other natural stones on wet surfaces.

APPLICATIONS

- Suitable for use in swimming pools, fountains and bathrooms underwater installations or wet surface areas.
- All type of tiles specially glass mosaic, vitrified, granite & stone.

FEATURES



Easy to use



High performance & strength



High strength polymer modified adhesive



Highly flexible adhesive



Self-curing adhesive



Premium - multi use adhesive



Water-resistant



Excellent for swimming pools, fountains, etc



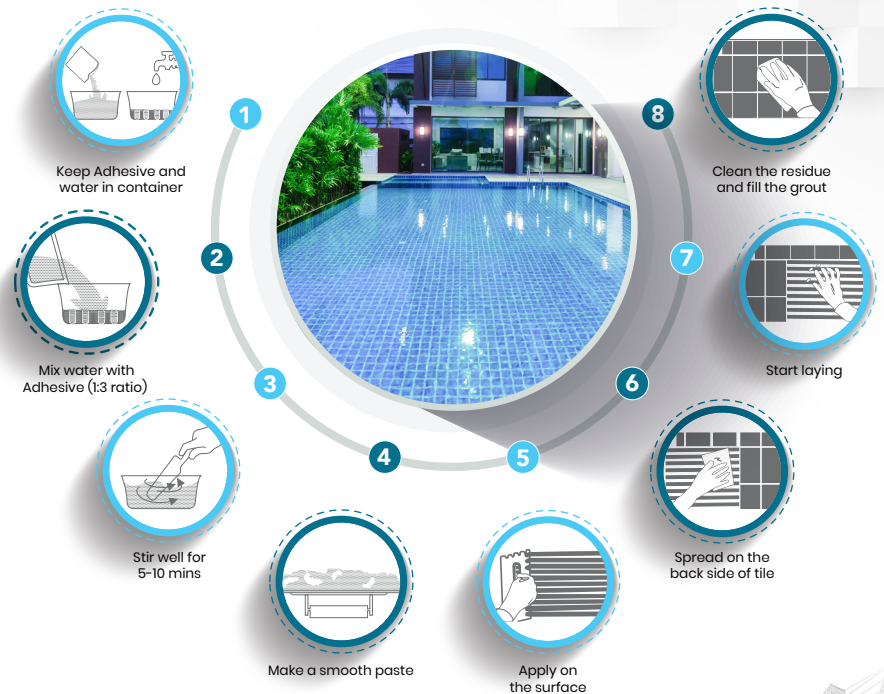
Single component mixed with water



High Strength Polymer Modified

VOC: Practically Nil

DIRECTIONS FOR USE



TECHNICAL SPECIFICATIONS

CONSUMPTION COVERAGE

Approx. 55-60 ft. per bag with 1/4"x1/4" (6mmX6mm) square notched trowel for av. Bed of 3mm
Coverage depends upon trowel size, type & substrate's evenness & smoothness

SHELF LIFE

12 months from the date of manufacturing in a dry and sealed condition.

PACKING SIZE

20Kg BOPP bag with liner

PARAMETERS	RESULTS	
Appearance	White	
Bed Thickness	4-6mm	
Mixing ratio	6.5 Ltr. water per 20 kg bag (1:3 ratio) in a clean container	
Mixing Time	5- 10 Min	
Open Time	10 mins	
Adjustment Time	15 mins	
Pot life	2 hrs.	
Bulk density	1.4gm/CC	
Setting Time	24 hrs.	
Full Strength	After 28 days	
PARAMETERS	REQUIRED AS PER IS : 15477-2019 (TYPE-3)	TEST VALUE OBTAINED
1. Tensile Adhesion strength (Min) Dry condition @ 28 days	1.5 N/mm ²	1.8 N/mm ²
2. Shear Adhesion strength (Min) Dry condition @ 28 days	1.5 N/mm ²	1.9 N/mm ²
3. Slip Resistance 'T'	Not more than 0.5 mm	≤ 0.35 mm
4. Deformability 'S'	≥ 2.5 mm - ≤ 5.0 mm	≥ 2.65 mm

Working property at 70° F (25° C)± 2°

Note:- Actual field performance & results will depend on Installation method & site/weather conditions.



SOMANY

Ezy Fix

SEF 888

LIMITLESS TILE & STONE ADHESIVE

EN 12004:C2TES1

IS 15477:2019 : Type 4 TS1

SOMANY Ezy Fix Limitless Tile & Stone Adhesive SEF 888 is a premium water - resistant, high performance polymer modified cementitious wall tile adhesive, specially formulated for fixing vitrified tiles, specially large size granite and other natural stones on exterior surfaces. It can be used for cladding of tiles and stones on external building surfaces.

APPLICATIONS

- Specifically designed for exterior wall of all types of ceramic tiles, vitrified tiles, Porcelain tiles, marble, granite & natural stone etc.
- Ideal for high rise buildings.

FEATURES



Easy to use



High performance & strength



High strength polymer modified adhesive



Highly flexible adhesive



Self-curing adhesive



Premium - multi use adhesive



Water - resistant



High rise buildings



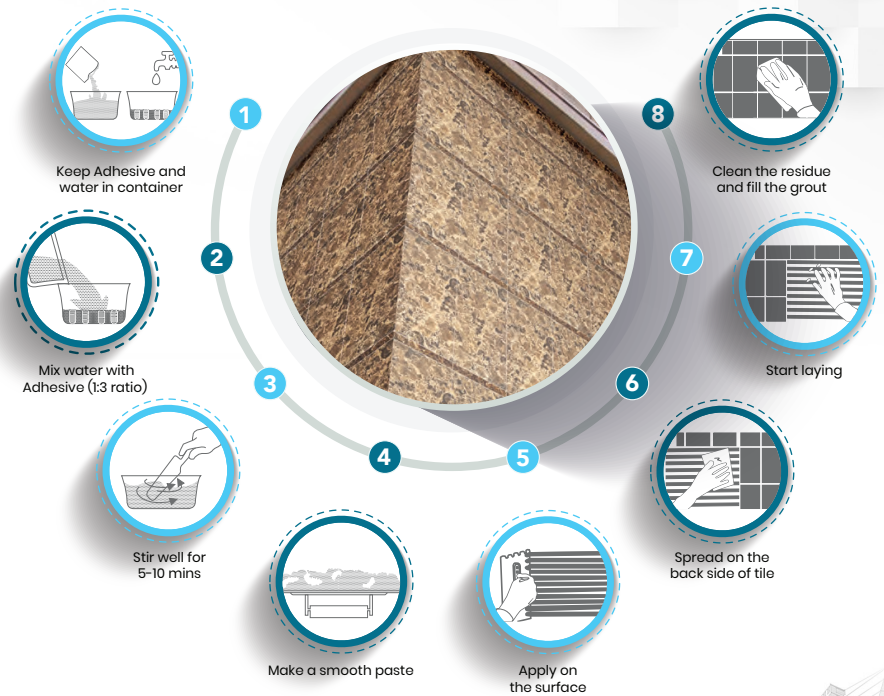
Single component mixed with water



VOC: Practically Nil

High Strength Polymer Modified

DIRECTIONS FOR USE



TECHNICAL SPECIFICATIONS*

CONSUMPTION COVERAGE

Approx. 55-60 ft. per bag with 1/4"X1/4" (6mmX6mm) square notched trowel for av. Bed of 3mm
Coverage depends upon trowel size, type & substrate's evenness & smoothness

SHELF LIFE

12 months from the date of manufacturing in a dry and sealed condition.

PACKING SIZE

20Kg BOPP bag with liner

PARAMETERS	RESULTS	
Appearance	Grey	
Bed Thickness	4-6mm	
Mixing ratio	5.5-6 Ltr. water per 20 kg bag (1:3 ratio) in a clean container	
Mixing Time	5- 10 Min	
Open Time	10 mins	
Adjustment Time	15 mins	
Pot life	2 hrs.	
Bulk density	1.4gm/CC	
Setting Time	24 hrs.	
Full Strength	After 28 days	
PARAMETERS	REQUIRED AS PER IS : 15477-2019 (TYPE-3)	TEST VALUE OBTAINED
1. Tensile Adhesion strength (Min) Dry condition @ 28 days	1.5 N/mm ²	2 N/mm ²
2. Shear Adhesion strength (Min) Dry condition @ 28 days	1.5 N/mm ²	2.2 N/mm ²
3. Slip Resistance 'T'	Not more than 0.5 mm	≤ 0.32 mm
4. Deformability 'SI'	≥ 2.5 mm - ≤ 5.0 mm	≥ 2.65 mm

Working property at 70° F (21° C)

Note:- Actual field performance & results will depend on Installation method & site/weather conditions.



* For Detailed Technical Specification refer page no. 26 to Page no. 33

SOMANY

Ezy Fix

SEF 777 / 777 WHITE
ELEVATION TILE ADHESIVE

EN 12004:C2TES1

IS 15477:2019 : Type 3 TS1

SOMANY Ezy Fix Elevation Tile adhesive SEF 777 is a premium water - resistant, high performance polymer modified cementitious wall tile adhesive, specially formulated for fixing vitrified tiles, granite and other natural stones on exterior surfaces. It can be used for cladding of tiles and stones on external building surfaces.

APPLICATIONS

- Available in white also.
- Specifically designed for exterior wall & installations of large size ceramic tiles, vitrified tiles, semi vitreous tiles, interior wall/floor surfaces, marble, granite & natural stone etc.
- Ideal for use in green buildings.

FEATURES



Easy to use



High performance & strength



High strength polymer modified adhesive



Highly flexible adhesive



Self-curing adhesive



Premium - multi use adhesive



Water - resistant



Excellent for swimming pools, fountains, etc



Single component mixed with water

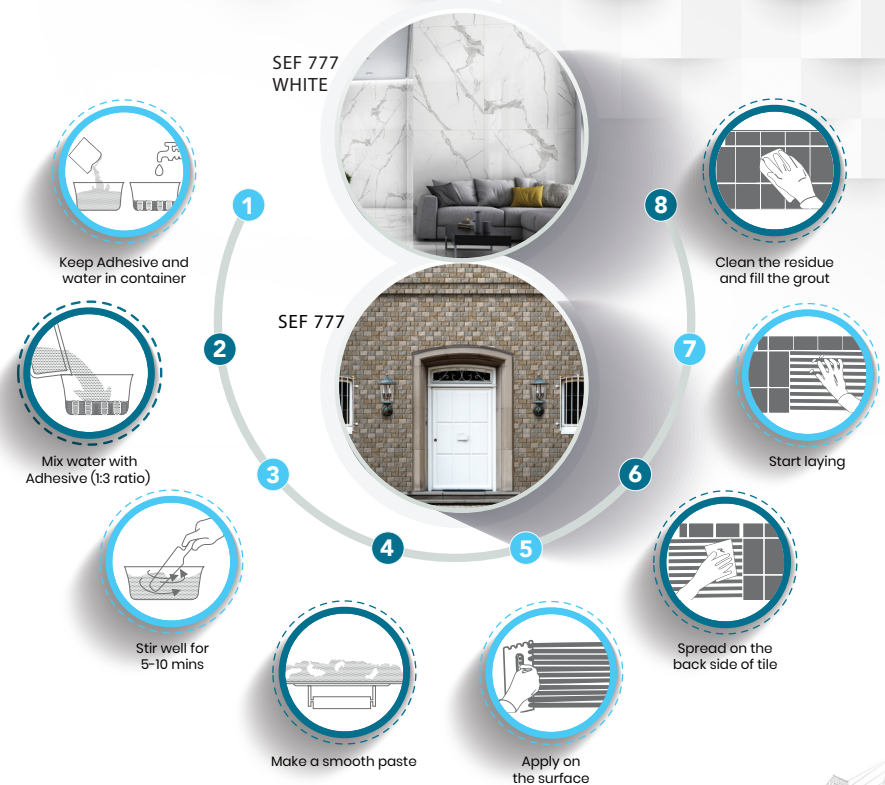


VOC: Practically Nil

High Strength Polymer Modified

*Recommendation: Wall mounting & tile fixing should be upto 60 feet for 600X600mm & 600X1200mm

DIRECTIONS FOR USE



TECHNICAL SPECIFICATIONS*

CONSUMPTION COVERAGE

Approx. 55-60 ft. per bag with 1/4"x1/4" (6mmX6mm) square notched trowel for av. Bed of 3mm
Coverage depends upon trowel size, type & substrate's evenness & smoothness

SHELF LIFE

12 months from the date of manufacturing in a dry and sealed condition.

PACKING SIZE

20Kg BOPP bag with liner

PARAMETERS	RESULTS	
Appearance	Grey / White	
Bed Thickness	4-6mm	
Mixing ratio	5.5-6 Ltr. water per 20 kg bag (1:3 ratio) in a clean container	
Mixing Time	5- 10 Min	
Open Time	20 mins	
Adjustment Time	25 mins	
Pot life	2 Hrs	
Bulk density	1.4gm/CC	
Setting Time	24 Hrs	
Full Strength	After 28 days	
PARAMETERS	REQUIRED AS PER IS : 15477-2019 (TYPE-3)	TEST VALUE OBTAINED
1. Tensile Adhesion strength (Min) Dry condition @ 28 days	1.5 N/mm ²	1.8 N/mm ²
2. Shear Adhesion strength (Min) Dry condition @ 28 days	1.5 N/mm ²	1.9 N/mm ²
3. Slip Resistance 'I'	Not more than 0.5 mm	≤ 0.35 mm
4. Deformability 'SI'	≥ 2.5 mm - ≤ 5.0 mm	≥ 2.60 mm

Working property at 70° F (21° C)

Note:- Actual field performance & results will depend on Installation method & site/weather conditions.



* For Detailed Technical Specification refer page no. 26 to Page no. 33

SOMANY

Ezy Fix

SEF 666 / 666 WHITE
TOUGH BOND TILE ADHESIVE

EN 12004:C1TE

IS 15477:2019 : Type 2

SOMANY Ezy Fix Tough Bond Tile Adhesive SEF 666 is a high performance polymer modified cement based tile adhesive. Specially designed for fixing ceramic tiles, vitrified tiles & porcelain tiles on interior walls. It is suitable for various wall installations in kitchens, bathrooms, corridors, lobbies, meeting rooms, central halls etc & is applicable in all types of ceramic, vitrified and porcelain tiles.

APPLICATIONS

- Available in white also.
- Specifically designed for interior wall & installations of large size ceramic tiles, vitrified tiles, semi vitreous tiles, interior wall/floor surfaces, marble, granite & natural stone etc.

FEATURES



Easy to use



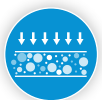
High performance & strength



High strength polymer modified adhesive



Highly flexible adhesive



Self-curing adhesive



Premium - multi use adhesive



Water-resistant



Cladding/installation in wall



Suitable for wet wall surfaces



Single component mixed with water



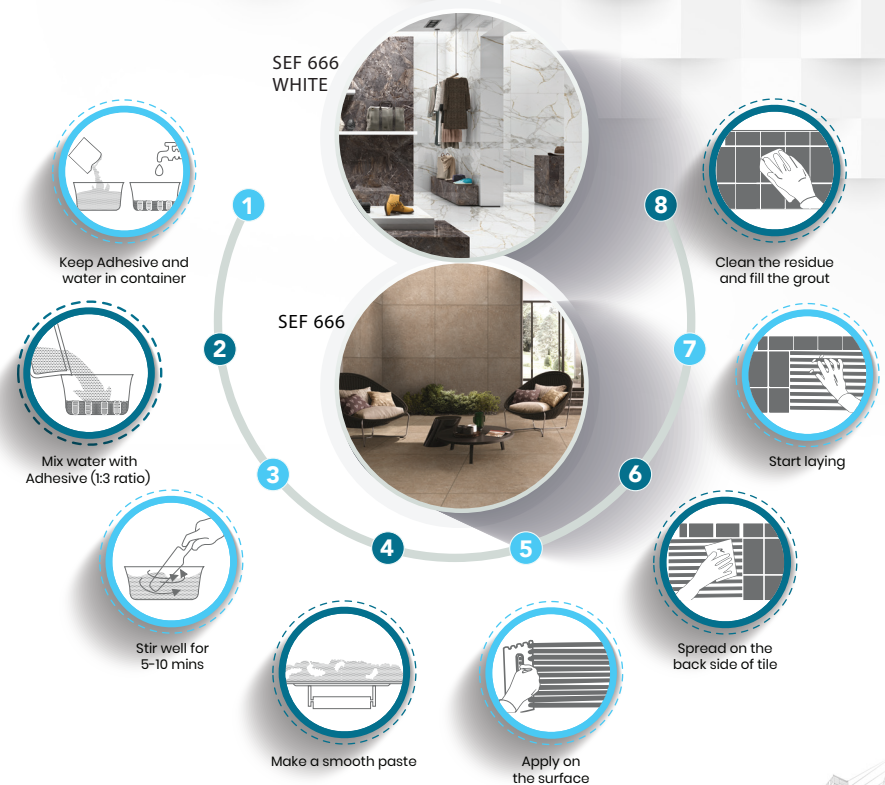
Ultimate bond strength

VOC: Practically Nil



High Strength Polymer Modified

DIRECTIONS FOR USE



TECHNICAL SPECIFICATIONS*

CONSUMPTION COVERAGE

Approx. 55-60 ft. per bag with 1/4"x1/4" (6mmX6mm) square notched trowel for av. Bed of 3mm
Coverage depends upon trowel size, type & substrate's evenness & smoothness

SHELF LIFE

12 months from the date of manufacturing in a dry and sealed condition

PACKING SIZE

20kg BOPP bag with liner

PARAMETERS	RESULTS	
Appearance	Grey	
Bed Thickness	4-6mm	
Mixing ratio	5.5-6 Ltr. water per 20 kg bag (1:3 ratio) in a clean container	
Mixing Time	5- 10 Min	
Open Time	15 Mins	
Adjustment Time	20 Mins	
Pot life	2 Hrs	
Bulk density	1.4gm/CC	
Setting Time	24 Hrs	
Full Strength	After 28 days	
PARAMETERS	REQUIRED AS PER IS : 15477-2019 (TYPE-2)	TEST VALUE OBTAINED
1. Tensile Adhesion strength (Min) Dry condition @ 28 days	1 N/mm ²	1.25 N/mm ²
2. Shear Adhesion strength (Min) Dry condition @ 28 days	1.25 N/mm ²	1.5 N/mm ²
3. Slip Resistance 'T'	Not more than 0.5 mm	≤ 0.30 mm
4. Deformability 'SI'	≥ 2.5 mm - ≤ 5.0 mm	≥ 2.65 mm

Working property at 70° F (21° C)

Note:- Actual field performance & results will depend on installation method & site/weather conditions.

*Recommendation: Interior wall mounting and tile fixing should be upto 30 ft. for 600X600mm & 600X1200mm

* For Detailed Technical Specification refer page no. 26 to Page no. 33



SOMANY

Ezy Fix

SEF 555
WHITE TILE ADHESIVE

EN 12004:C1T

IS 15477:2019 : Type 1

SOMANY Ezy Fix White Tile Adhesive SEF 555 is a high strength polymer added cement base white tile adhesive. Specially designed for fixing ceramic and vitrified tiles in interior floor surfaces. This highly flexible adhesive also has an excellent water proofing ability. When properly applied, it takes care of hollowness problem. It gives excellent bond on cementitious surfaces, concrete plaster and tile surfaces.

APPLICATIONS

- Suitable for (interior application).
- It is suitable for fixing all type of ceramics tiles on interior wall/floor surfaces & regular size for vitrified floor tiles.
- Suitable for white tiles & stones in floor application.

FEATURES



Easy to use



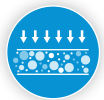
High performance & strength



High strength polymer modified adhesive



Easy mixing and smooth application & better workability



Self-curing adhesive



Single component mixed with water



High bond strength



Suitable for thick bed installation



Water-resistant



VOC: Practically Nil

High Strength Polymer Modified

DIRECTIONS FOR USE



TECHNICAL SPECIFICATIONS*

CONSUMPTION COVERAGE
Approx. 55-60 sq. ft. per bag with 1/4"X1/4" (6mmX6mm) square notched trowel for av. Bed of 3mm Coverage depends upon trowel size, type & substrate's evenness & smoothness
SHELF LIFE
12 months from the date of manufacturing in a dry and sealed condition
PACKING SIZE
20Kg BOPP bag with liner

PARAMETERS	RESULTS	
Appearance	White	
Bed Thickness	4-6mm	
Mixing ratio	6.5 Ltr. water per 20 kg bag (1:3 ratio) in a clean container	
Mixing Time	5- 10 Min	
Open Time	15 Mins	
Adjustment Time	20 Mins	
Pot life	2 hrs.	
Bulk density	1.4gm/CC	
Setting Time	24 hrs.	
Full Strength	After 28 days	
PARAMETERS	REQUIRED AS PER IS : 15477-2019 (TYPE-1)	TEST VALUE OBTAINED
1. Tensile Adhesion strength (Min) Dry condition @ 28 days	0.5 N/mm ²	1 N/mm ²
2. Shear Adhesion strength (Min) Dry condition @ 28 days	1 N/mm ²	1.5 N/mm ²

Working property at 70° F (21° C)

Note:- Actual field performance & results will depend on installation method & site/weather conditions.

* For Detailed Technical Specification refer page no. 26 to Page no. 33



SOMANY

Ezy Fix

SEF 444

EN 12004:C1T

IS 15477:2019 :Type 2



SOMANY Ezy Fix SEF 444 is a high strength Polymer modified cement based premium ISI Tile Adhesive. Specially formulated for fixing ceramics tiles/ vitrified tiles in interior and exterior locations on wall & floor. This highly flexible adhesive also has an excellent water proofing ability. It gives excellent bond on cementitious surfaces, concrete, plaster, marble and other tile surfaces. This adhesive can also be used for renovation areas. Usage tip: Somany Ezy Fix adhesive, needs to be mixed with SOMANY Ezy Fix Adhesive Admix for stone and granite installations and vitrified medium size for wall & ceramic tiles installations.

APPLICATIONS

- It is suitable for fixing all type of ceramics tiles on interior wall/floor surfaces & Vitrified tiles
(*Regular Size for Floor & Small Size for wall mounting)

FEATURES



Easy to use



High performance & strength



Suitable for thick bed installation



Highly flexible adhesive



Self-curing adhesive



High bond strength



Water-resistant



High strength polymer modified adhesive



Easy mixing, smooth application & user friendly



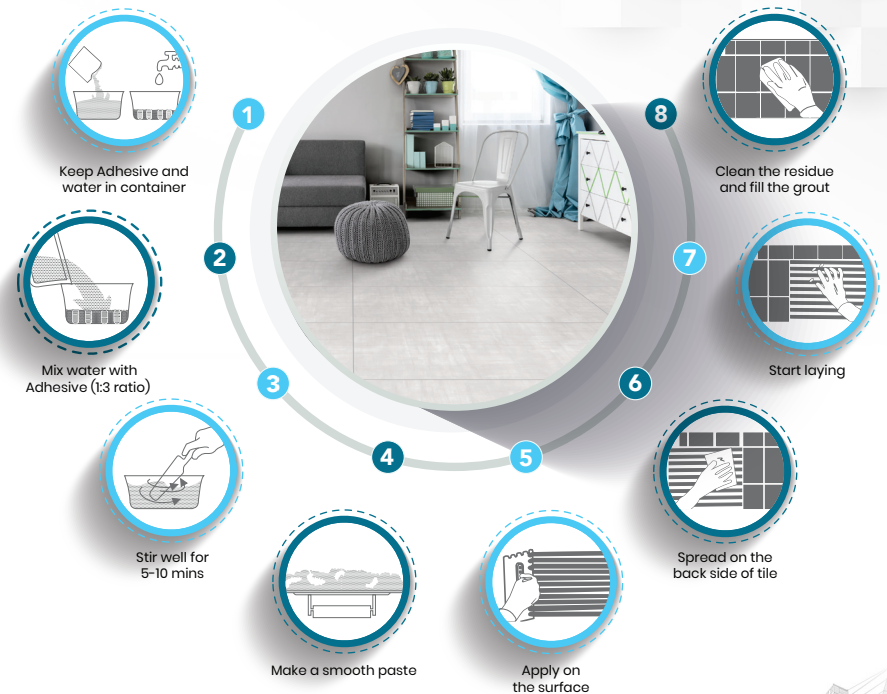
Single component mixed with water



High Strength Polymer Modified

VOC: Practically Nil

DIRECTIONS FOR USE



TECHNICAL SPECIFICATIONS*

CONSUMPTION COVERAGE
Approx. 55-60 sq. ft. per bag with 1/4"X1/4" (6mmX6mm) square notched trowel for av. Bed of 3mm Coverage depends upon trowel size, type & substrate's evenness & smoothness
SHELF LIFE
12 months from the date of manufacturing in a dry and sealed condition
PACKING SIZE
20Kg BOPP bag with liner

PARAMETERS	RESULTS	
Appearance	Grey	
Bed Thickness	4-6mm	
Mixing ratio	5.5-6 Ltr. water per 20 kg bag (1:3 ratio) in a clean container	
Open Time	15 Mins	
Adjustment Time	20 Mins	
Pot life	2 hrs.	
Setting Time	24 hrs.	
Full Strength	After 28 days	
PARAMETERS	REQUIRED AS PER IS : 15477-2019 (TYPE-2)	TEST VALUE OBTAINED
1. Tensile Adhesion strength (Min) Dry condition @ 28 days	1 N/mm ²	1.1 N/mm ²
2. Shear Adhesion strength (Min) Dry condition @ 28 days	1.25 N/mm ²	1.4 N/mm ²

Working property at 70° F (21° C)

Note:- Actual field performance & results will depend on installation method & site/weather conditions.



* For Detailed Technical Specification refer page no. 26 to Page no. 33

SOMANY

Ezy Fix

SEF 333

EN 12004:C1T

IS 15477:2019 : Type 1

SOMANY Ezy fix (Express) SEF 333 is a polymer added cement based tile adhesive. It gives excellent bond on cementitious surfaces like concrete and plaster. Somany Ezy Fix 333 is specially designed for application for ceramics and vitrified tiles (Internal wall & floor surfaces). This highly flexible adhesive also has an excellent water proofing ability. When properly applied, it takes care of hollowness problem.

APPLICATIONS

- It is suitable for fixing all type of ceramics tiles on interior wall/floor surfaces & small/regular size for vitrified floor tiles.

FEATURES



Easy to use



Suitable for thick bed installation



High bond strength



High strength polymer modified adhesive



Self-curing adhesive



Water-resistant



Easy mixing, smooth application & user friendly



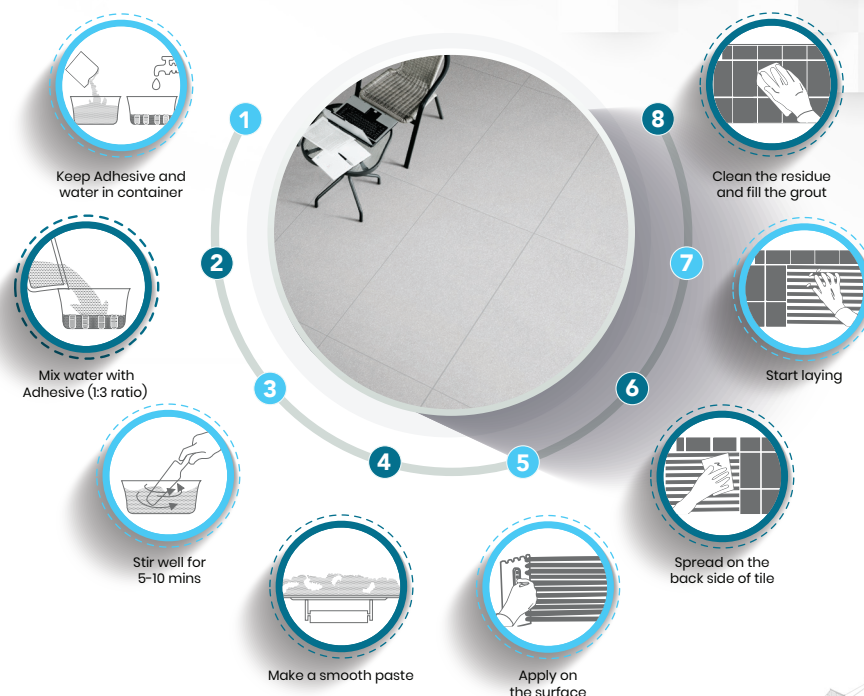
Single component mixed with water



High Strength Polymer Modified

VOC: Practically Nil

DIRECTIONS FOR USE



TECHNICAL SPECIFICATIONS*

CONSUMPTION COVERAGE
Approx. 55-60 sq. ft. per bag with 1/4"X1/4" (6mmX6mm) square notched trowel for av. Bed of 3mm Coverage depends upon trowel size, type & substrate's evenness & smoothness
SHELF LIFE
12 months from the date of manufacturing in a dry and sealed condition
PACKING SIZE
20Kg BOPP bag with liner

PARAMETERS	RESULTS	
Appearance	Grey	
Bed Thickness	4-8mm	
Mixing ratio	5.5-6 Ltr. water per 20 kg bag (1:3 ratio) in a clean container	
Mixing Time	5- 10 Min	
Open Time	15 Mins	
Adjustment Time	20 Mins	
Pot life	2 hrs.	
Bulk density	1.4gm/CC	
Setting Time	24 hrs.	
Full Strength	After 28 days	
PARAMETERS	REQUIRED AS PER IS : 15477-2019 (TYPE-1)	TEST VALUE OBTAINED
1. Tensile Adhesion strength (Min) Dry condition @ 28 days	0.5 N/mm ²	1 N/mm ²
2. Shear Adhesion strength (Min) Dry condition @ 28 days	1 N/mm ²	1.5 N/mm ²

Working property at 70° F (21° C)

Note:- Actual field performance & results will depend on installation method & site/weather conditions.

* For Detailed Technical Specification refer page no. 26 to Page no. 33



SOMANY

Ezy Fix

SUPER 300

EN 12004:C1T

IS 15477:2019 : Type 1

SOMANY Ezy fix Super 300 is a polymer added cement based tile adhesive. It gives excellent bond on cementitious surfaces like concrete and plaster. Somany Ezy Fix Super 300 is specially designed for application for ceramics and vitrified tiles (Internal wall & floor surfaces). This highly flexible adhesive also has an excellent water proofing ability. When properly applied, it takes care of the problem of hollowness.

APPLICATIONS

- It is suitable for fixing all type of ceramics tiles on interior wall/floor surfaces & small/regular size for vitrified floor tiles.

FEATURES



Easy to use



Suitable for thick bed installation



High bond strength



High strength polymer modified adhesive



Self-curing adhesive



Water-resistant



Easy mixing & smooth application



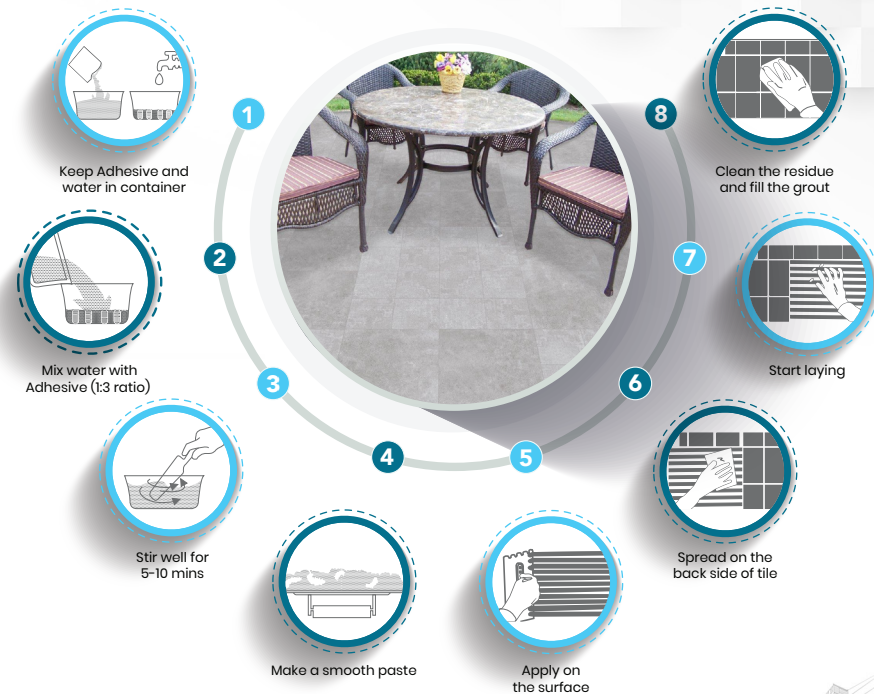
Single component mixed with water



High Strength Polymer Modified

VOC: Practically Nil

DIRECTIONS FOR USE



TECHNICAL SPECIFICATIONS*

CONSUMPTION COVERAGE
Approx. 55-60 sq. ft. per bag with 1/4"X1/4" (6mmX6mm) square notched trowel for av. Bed of 3mm Coverage depends upon trowel size, type & substrate's evenness & smoothness
SHELF LIFE
12 months from the date of manufacturing in a dry and sealed condition
PACKING SIZE
20Kg BOPP bag with liner

PARAMETERS	RESULTS	
Appearance	Grey	
Bed Thickness	4-8mm	
Mixing ratio	5.5-6 Ltr. water per 20 kg bag (1:3 ratio) in a clean container	
Mixing Time	5- 10 Min	
Open Time	15 Mins	
Adjustment Time	20 Mins	
Pot life	2 hrs.	
Bulk density	1.4gm/CC	
Setting Time	24 hrs.	
Full Strength	After 28 days	
PARAMETERS	REQUIRED AS PER IS : 15477-2019 (TYPE-1)	TEST VALUE OBTAINED
1. Tensile Adhesion strength (Min) Dry condition @ 28 days	0.5 N/mm ²	1.05 N/mm ²
2. Shear Adhesion strength (Min) Dry condition @ 28 days	1 N/mm ²	1.5 N/mm ²

Working property at 70° F (21° C)

Note:- Actual field performance & results will depend on installation method & site/weather conditions.

* For Detailed Technical Specification refer page no. 26 to Page no. 33



SOMANY

Ezy Fix

CEMENT POLYMER GROUT

SOMANY Ezy Fix - Cement Polymer Grout is made of white cement, fine graded filler, chemical additives including powder polymers and colour-fast pigments. It is mixed with water or SOMANY Ezy Fix Admix to get additional strength and increase flexibility in tile joints. SOMANY Ezy Fix - Cement Polymer Grout is designed for joint width upto 1-4 mm maximum. It is suitable for grouting ceramics tiles, vitrified tiles, glass mosaics, marble, granite and natural stone.

APPLICATION

- For grouting interior/ exterior residential and commercial wall & floor surfaces in dry or wet conditions.
- Advice to use with Admixture of 400ml bottle.

FEATURES



High Performance Polymer modified grout



Good Compressive Strength



Easy to apply & Clean



Available in Range of Colors



Smooth & Fine Finish



Exterior & Interior Use



Weather Resistant



No Shrinking & Cracking



High Strength Polymer Based Grout

Note:- Actual field performance & results will depend on installation method & site/weather conditions.

CONSUMPTION

Consumption depends on size of tiles, joint width and good workmanship.

TECHNICAL SPECIFICATIONS

COVERAGE ESTIMATE		STORAGE & SHELF LIFE	
$\frac{(A+B) \times C \times D \times 1.65}{A \times B} \frac{\text{Kg}}{\text{M}^2}$ <p>A=Length of the Tile, B=Breadth of the Tile, C=Thickness of the Tile, D=Space between two tiles Wet Density=1.65 <i>Note: All the dimensions are in Millimeter (mm)</i></p>		12 months from the date of manufacturing	
PACKING DETAILS			
Packing Details		1 Kg	

PARAMETERS	RESULTS
Form	Free Flow Powder
Color	As per the shade (Presently 30)
Mix density	1.7-2.0
Pot Life	1 hr to 1.5 hr
Curing time	24 hrs
Cleaning tool	With Water immediately after use
Tile grout mixing ratio	300-350 ml water for 1 Kg material
Compressive Strength @28 days	14 MPa
Tensile Strength	1.7 MPa
Shelf Life	12 months from date of manufacturing

SHADE COLOURS*



*Actual color may slightly vary from print

SOMANY

Ezy Fix

EPOXY / EPOXY (GLITTER) GROUT

SOMANY Ezy Fix - Epoxy Grout is a 3 Component Product, comprising of PART A, PART B and PART C for ease of application and the ability to fill Tiles & Stone joints. It is 100% Solid Epoxy Grout with high resistance to chemical, temperature and stain. It is non-shrinking, non-sagging, fast-curing efflorescence free grout. It is ideal for installation where high strength mold and dew-resistant grout joints are required. It is suitable for grouting ceramic tiles, vitrified tiles, glass mosaics, marble & granite and other natural stone etc. This product is designed for joint width upto 2-12 mm maximum.

APPLICATIONS

- For interior/exterior residential and commercial floor/wall surface or under water areas such as swimming pools & high traffic areas .

FEATURES



Easy to apply



High Abrasion Resistance



Acid-Resistant



Strong & durable



Temperature-Resistant



Colours Available:
Silver, Gold & Copper



No Shrinkage and no water seepage



Stain - free & dirt-proof



Anti - bacterial- & anti-fungal



Durable - joints will not crack or peel



Somany Ezy Grout Epoxy comes in below mentioned variants

- 5 kg, 3 component (Part A-Resin 1.00 kg, Par B: Hardener 0.50 kg & Par C: Filler 3.50 kg).
- 1 kg, 3 component (Part A-Resin 0.20 kg, Par B: Hardener 0.10 kg & Par C: Filler 0.70 kg).
- 1.5 kg, 3 component epoxy- separate Resin & Hardener (Part A: Resin 1.00 kg and Part B: Hardener 0.50 kg).
- 14 kg, Filler separate packaging (4 packets each consisting 3.5 Kg filler packet).
- 5 kg, Ezy Fix-DUO Epoxy Grout (5 Nos. Part A: Resin 0.90 kg each and 5 nos. Part B: Hardener 0.10 kg each).

Note:- Actual field performance & results will depend on installation method & site/weather conditions.

CONSUMPTION

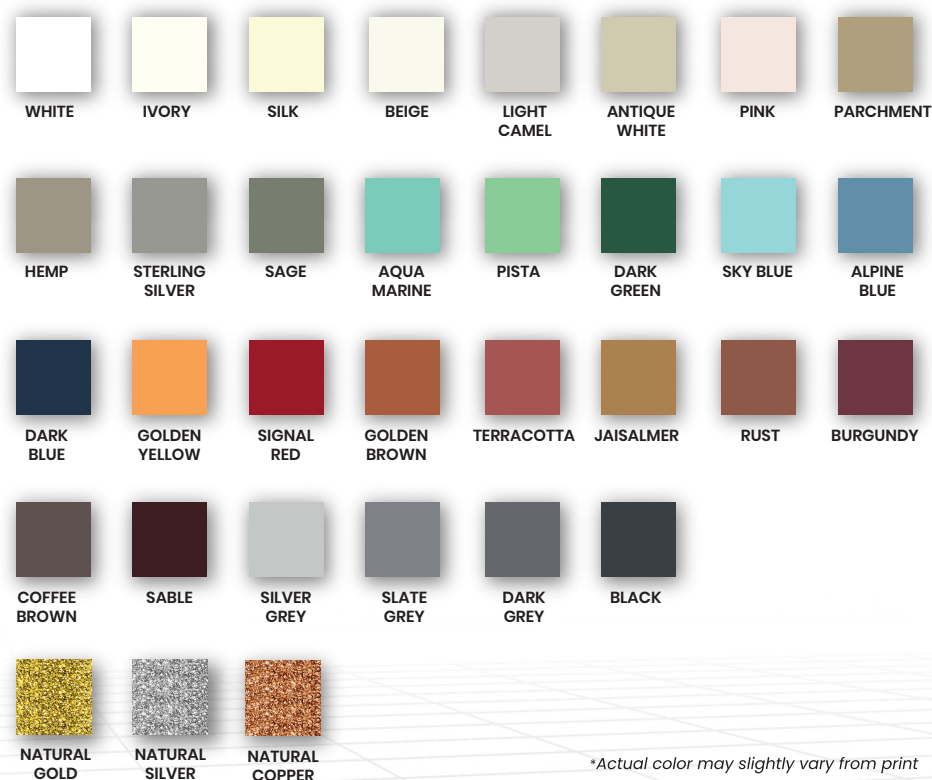
Consumption depends on size of tiles, joint width and good workmanship.

TECHNICAL SPECIFICATIONS*

COVERAGE ESTIMATE		PACKING DETAILS	
$\frac{(A+B) \times C \times D \times 1.7}{A \times B}$	$\frac{\text{Kg}}{\text{M}^2}$	Packing Details	1 Kg 5 Kg
A=Length of the Tile, B=Breadth of the Tile, C=Thickness of the Tile, D=Space between two tiles Wet Density=1.7 <i>Note: All the dimensions are in Millimeter (mm)</i>		Resin (Part-A)	0.2 kg 1 Kg
		Hardner (Part-B)	0.1 Kg 0.5 Kg
		Filler (Part-C)	0.7 Kg 3.5 Kg
STORAGE & SHELF LIFE			
12 months from the date of manufacturing			

PARAMETERS	RESULTS
Appearance	Part A Liquid resin, Part B Liquid Hardner, Part C filler
Pot life	Approx 60 mins.
Mixing proportion for 1Kg	Part A 0.2 Kg : Part B 0.1 Kg : Part C 0.7 Kg
Setting time	Approx 6-8 hrs
Foot traffic	After 24 hrs.
Water Absorption	Nil
Temperature range for application	5°C to 50°C
Mixing consistency	Creamy Paste
Shrinkage	Approx 0%
Temperature resistance	Approx 80°C

SHADE COLOURS*



*Actual color may slightly vary from print



Ezy Fix

PU ADHESIVE

EN 12004:R2TE

IS 15477:2019 : Type 5

SOMANY PU Adhesive is two component when mixed together give more strength and more flexible Adhesive for Installation of Ceramic, Vitrified, Metal, Glass, Agglomerates glass tile & natural stone on any substrate. SOMANY PU Adhesive water free adhesive are made up of a polyurethane base (component A) and a special hardener (component B). It is highly elastic, flexible and waterproof, thixotropic & suitable to water sensitive tiles & stones on highly expendable, absorbent & non-absorbent substrates.

APPLICATIONS

- Indoor and outdoor, bonding of wall and floor ceramic, Vitrified Tiles, Stone Material, Glass, Metal tiles, Reinforced Polyester, Pvc, Wood, Asphalt, Gypsum board.

FEATURES



Heavy duty Industrial Adhesive



Chemical & Heat Resistance



Gives permanent bond & is durable



Water, Shock & Vibration Resistance



Superior bond & easy to apply



More strength & more flexible



TECHNICAL SPECIFICATIONS*

PARAMETERS		COMPONENT A	COMPONENT B
Consistency		Thick paste	Fluid Liquid
Colour		White	Straw transparent
Density		1.90	0.97
Brookfield Viscosity (m-pa.s)		1810,918	49
Performance Property(at +23°C and 50% R.H)			
Consistency		Very viscous	
Viscosity (Mixed)		1281,118 CPS	
Mixing ratio by weight		Component A: Component B = 15.6: 1 .	
Mix density (kg/m3)		1732	
Application temperature range		+10°C To 38°C	
Pot life		40 Minutes	
Setting time	Initial	3 hr	
	final	6 hr	
Light foot traffic		24 hr	
Ready for use		7 days	

COVERAGE DETAILS (Per 4 kg PAIL)

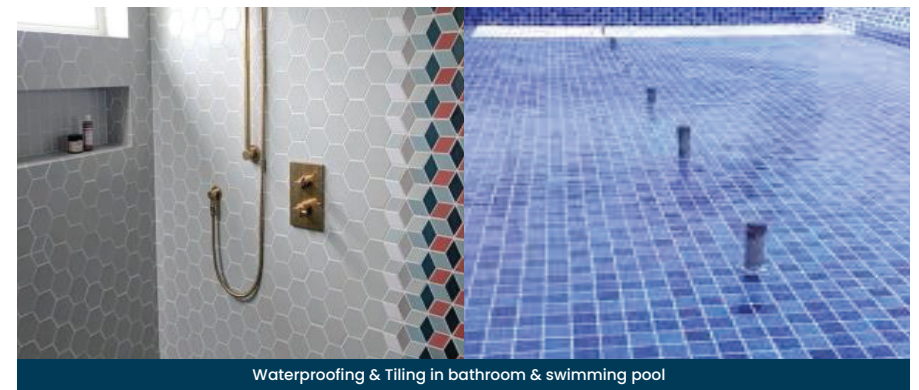
Trowel size	Avg. Bed thickness	Mini. coverage	Max. coverage
6mm*6 mm Square Notch(1/4*1/4)	3 mm	10 Sq.ft	12 sq ft

PACK OF TWO PARTS CONTAINS 4 KG COMPLIMENTARY

Part A (Filler & Resin)	Part B (Hardener)
3.7 Kg	300 gm

STORAGE & SHELF LIFE

At least 24 Months from the date of Mfg in original closed packaging.
 Note: - Component B (Hardener) must be store in warm place to avoid crystallization during cold weather (at least +100C). If crystallization occurs re-dissolve by warming before use.



Waterproofing & Tiling in bathroom & swimming pool



Tiling over wooden surface



Stone fix by spot fixing



Meet IS 15477:2019 Meet EN 12004 & ISO 13007



Meet ANSI: A 118.3

Note:- Actual field performance & results will depend on installation method & site/weather conditions.

SOMANY[®]

Ezy Fix

EXTRA STRONG TILE CLEANER

SOMANY Ezy Fix - Tile Cleaner is a fast acting, acid-based powerful cleaner for daily maintenance, which can also be used as general purpose cleaner on acid resistance surface to remove cementitious grout, adhesive residues, hard water deposits and other hard stains from ceramic/vitrified tiles and sanitarywares. It is water soluble and can be diluted upto 1:10 ratio as per requirement.

APPLICATIONS

- Ceramic tiles/Vitrified Tiles/Granite/Sanitaryware
- Wall & Floor
- Interior & exterior
- Keep out of the reach of children

FEATURES

-  Easy to apply
-  Fast action
-  Powerful formula
-  Kill Germs
-  No Shrinkage and no water seepage
-  Removes efflorescence & oxide stains
-  Removes cement hard stain
-  Preserves and maintains tile print/color.



WHERE TO USE

For rapid removal of white yellowish spots/layers over tiles along with cement, oil, grease & wax stains removal from concrete, asbestos, terrazo & ceramics

HOW TO USE

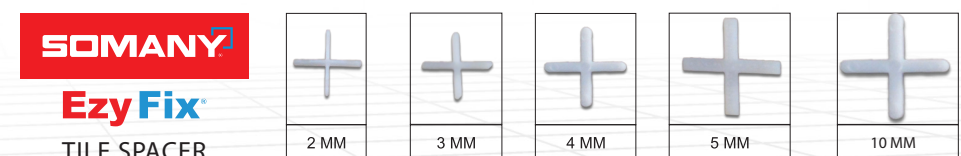
1. For normal cleaning dilute two caps full of SOMANY Ezy Fix - Tile Cleaner in 4-liter water bucket, then mop the surface gently to get clean & shiny surface.
2. To remove stains, wax, oil, grease, & cement stains use undiluted SOMANY Ezy Fix - Tile Cleaner. Pour it on the effected surface & leave for five minutes. Finally mop it properly to get best results.

SOMANY Ezy Fix - Tile Cleaner is recommended for cleaning Wall tiles, Floor Tiles, Mosaic & Sanitaryware

COVERAGE
Coverage depends on the porosity of the surface, stains, dilution ratio etc.
STORAGE & SHELF LIFE
12 months from the date of manufacturing in a dry and sealed condition.
PACKING SIZE
01 ltr.



ALSO AVAILABLE



*This is pictorial representation of spacers respective of sizes. Actual sizes & physical dimensions may differ.

Note:- Actual field performance & results will depend on installation method & site/weather conditions.

SOMANY

Ezy Fix

ADMIXTURE

SOMANY Ezy Fix Admixture is a polymer based liquid admixture specially designed for use in combination with Ezy Fix - Cement Polymer Grout. SOMANY Ezy Fix Admixture when used in place of water provides a dense, colour-fast grout. It increases flexibility and high compression strength of cement grout for all types of ceramic tiles, vitrified tiles, glass mosaic tiles, marble, granite and natural stone. It is suitable for use in interior and exterior locations.

ADVANTAGES

- Improves the flexibility of cement polymer grout
- Improves the strength
- Water resistance
- Easy to Clean
- Resistance to mild acids

FEATURES



Easy to clean



Easy to mix with grout



Polymer Additive for cement polymer grout



Color-Fastness



High Performance
Tile Joint Filler Admixture

PACKING SIZE: 400ml

STORAGE & SHELF LIFE: 12 months from the date of manufacturing

Note:- Actual field performance & results will depend on installation method & site/weather conditions.

SOMANY

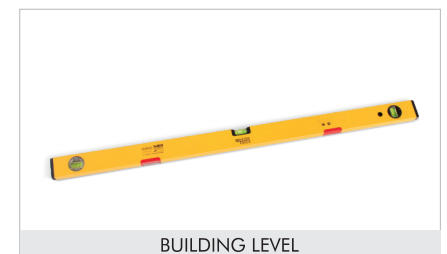


TILE MASTER KIT

A COMPLETE RANGE OF WORLD-CLASS
TILE LAYING EQUIPMENT



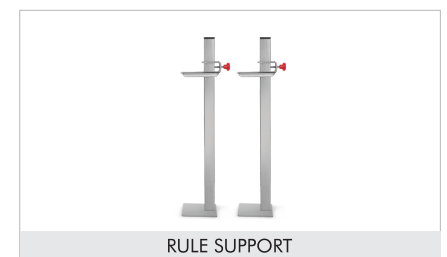
NIPPERS



BUILDING LEVEL



NOTCHED TROWEL: PLASTER GROOVING



RULE SUPPORT



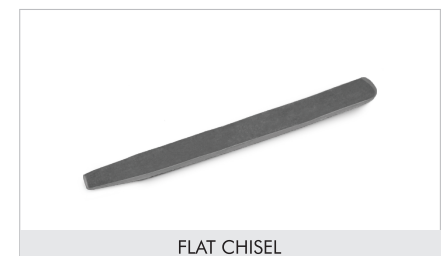
HOLE MARKER



ELECTRIC CUTTER CUM DRILL



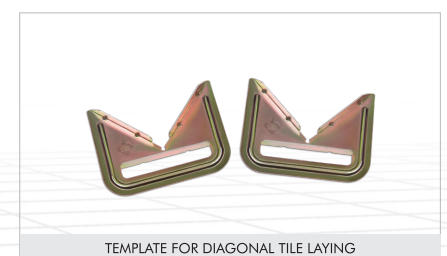
TOOL BAG



FLAT CHISEL



WHITE RUBBER HAMMER



TEMPLATE FOR DIAGONAL TILE LAYING

EZY FIX SEF 888 TECHNICAL DATA

EN 12004:C2TES1

IS 15477:2019 : Type 4 TS1

STANDARD	PARAMETER	SPECIFICATIONS & STANDARDS	REQUIREMENT	TYPICAL VALUE
ANSI A118.4-1999	Open time	20 Minutes at 28 days : ANSI A118.4 Clause – 5.3	≥75 psi (0.50 Mpa)	100 – 130 psi (0.69–0.90 Mpa)
	Sag	Sag: ANSI A118.4–Clause 6.0	≤0.02 Inches (0.50 mm)	0.003 – 0.011 Inches (0.10–0.30 mm)
	Glazed wall tile shear strength	7 Days: ANSI A118.4 – Clause 7.1.2	> 300psi (2.07 Mpa)	320–390 psi (2.21–2.69 Mpa)
		7 Days Water immersion: ANSI A118.4– Clause 7.1.3	>200psi (1.38 Mpa)	220–280 psi (1.52–1.93 Mpa)
	Porcelain Mosaic Tile Shear Strength	1 Day: ANSI A118.4 –Clause 7.2.	>75psi (0.50 Mpa)	120–180 psi (0.83 – 1.24 Mpa)
		7 Days: ANSI A118.4 – Clause 7.2.3	>200psi (1.38 Mpa)	260 – 350 psi (1.80–2.42 Mpa)
		7 Days Water immersion: ANSI A118.1 – Clause 7.2.4	>150psi (1.03 Mpa)	220–275 psi (1.51–1.89 Mpa)
		28 Days: ANSI A118.4 – Clause 7.2.5	>200psi (1.38 Mpa)	305 – 360 psi (2.10–2.49 Mpa)
		28 Days: W/ Freeze–Thaw cycling ANSI A118.4 – Clause 7.2.5	>175psi (1.20 Mpa)	270 – 325 psi (1.86–2.23 Mpa)
	QUARRY Tile shear strength	12 Weeks: ANSI A118.4 – Clause 7.2.6	>200psi (1.38 Mpa)	300–350 psi (2.06– 2.42 Mpa)
		28 Days: ANSI A118.4 – Clause 7.3.2	>150psi (1.03 Mpa)	250 – 300 psi (1.72– 2.06 Mpa)
			28 Days: W/ Freeze–Thaw cycling ANSI A118.4 – Clause 7.3.3	>100psi (0.69 Mpa)
EN 12004 & ISO 13007	Open time	EN 1346	≥0.50 N/mm ²	0.75 – 1.20 N/mm ²
	Slip Resistance	EN 1308	≤0.50 mm	0.10–0.20 mm
	Tensile adhesion strength	Initial: EN 1348 – Clause 8.2	≥1.0 N/mm ²	1.40 – 2.0 N/mm ²
		After Water Immersion : EN 1348 - Clause 8.3	≥1.0 N/mm ²	1.50– 1.85 N/mm ²
		Heat Ageing: EN 1348 – Clause 8.4	≥1.0 N/mm ²	1.20– 1.60 N/mm ²
		Freeze- Thaw: EN 1348 – Clause 8.5	≥1.0 N/mm ²	1.80 – 2.00 N/mm ²
Transverse Deformation: EN 12002	≥2.5mm <5.00mm	2.50 mm – 2.60 mm		
IS 15477:2019	Tensile Adhesion	Dry Condition – Annex A (Clause 5.1)	Minimum 1.50 N/mm ²	1.60 – 1.80 N/mm ²
		Wet Condition – Annex A (Clause 5.1)	Minimum 1.00 N/mm ²	1.40– 1.60 N/mm ²
	Shear Adhesion	Dry Condition – Annex B (Clause 5.2)	Minimum 1.50 N/mm ²	1.80 – 2.00 N/mm ²
		Heat ageing– Annex B (Clause 5.2)	Minimum 1.00 N/mm ²	1.20– 1.40 N/mm ²
		Wet Condition – Annex B (Clause 5.2)	Minimum 1.00 N/mm ²	1.40– 1.60 N/mm ²
	Slip Resistance	Slip Resistance – Annex E (Clause 5.5)	≤0.50 mm	0.10–0.20 mm
Transverse Deformation	Transverse Deformation: (Clause 5.6)	≥2.5mm <5.00mm	2.50 mm – 2.80 mm	



COUNTER GAUGE



SCORING WHEEL 10 MM



JOINT SCRAPER



SAFETY HELMET & T-SHIRT



MANUAL TILE CUTTER



NOTCHED TROWEL



BIG HAMMER



KARNI BIG & SMALL



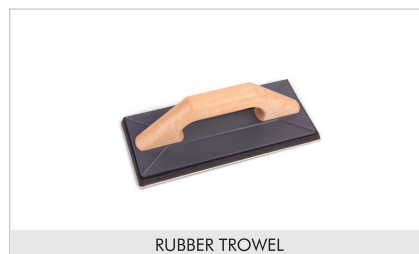
ABRASIVE BLOCK



PLUMB & ROPE



SAFETY GLASSES



RUBBER TROWEL



PENCIL WITH SHARPNER & MEASURING TAPE



RIGHT ANGLE (GUNIA)

EZY FIX SEF 777/ GLASS MOSAIC ADHESIVE TECHNICAL DATA

EN 12004:C2TES1

IS 15477:2019 : Type 3 TS1

STANDARD	PARAMETER	SPECIFICATIONS & STANDARDS	REQUIREMENT	TYPICAL VALUE
ANSI A118.4-1999	Open time	20 Minutes at 28 days : ANSI A118.4 Clause – 5.3	≥75 psi (0.50 Mpa)	100 – 130 psi (0.69–0.90 Mpa)
	Sag	Sag: ANSI A118.4- Clause 6.0	≤0.02 Inches (0.50 mm)	0.003 – 0.011 Inches (0.10-0.30 mm)
	Glazed wall tile shear strength	7 Days: ANSI A118.4 – Clause 7.12	> 300psi (2.07 Mpa)	320-390 psi (2.21-2.69 Mpa)
		7 Days Water immersion: ANSI A118.4- Clause 7.13	>200psi (1.38Mpa)	220-280 psi (1.52-1.93 Mpa)
	Porcelain Mosaic Tile Shear Strength	1 Day: ANSI A118.4 – Clause 7.2.2	>75psi (0.50Mpa)	120-180 psi (0.83 – 1.24 Mpa)
		7 Days: ANSI A118.4 – Clause 7.2.3	>200psi (1.38Mpa)	260 – 350 psi (1.80–2.42 Mpa)
		7 Days Water immersion: ANSI A118.1 – Clause 7.2.4	>150psi (1.03Mpa)	220-275 psi (1.51-1.89 Mpa)
		28 Days: ANSI A118.4 – Clause 7.2.5	>200psi (1.38Mpa)	305 – 360 psi (2.10-2.49Mpa)
		28 Days: W/ Freeze-Thaw cycling ANSI A118.4 – Clause 7.2.5	>175psi (1.20Mpa)	270 – 325 psi (1.86-2.23Mpa)
		12 Weeks: ANSI A118.4 – Clause 7.2.6	>200psi (1.38Mpa)	300-350 psi (2.06– 2.42 Mpa)
QUARRY Tile shear strength	28 Days : ANSI A118.4 – Clause 7.3.2	>150psi (1.03Mpa)	250 – 300 psi (1.72– 2.06 Mpa)	
	28 Days: W/ Freeze-Thaw cycling ANSI A118.4 – Clause 7.3.3	>100psi (0.69Mpa)	210 – 250 psi (1.45– 1.72 Mpa)	
EN 12004 & ISO 13007	Open time	EN 1346	≥0.50 N/mm ²	0.75 – 1.20 N/mm ²
	Slip Resistance	EN 1308	≤0.50 mm	0.10-0.20 mm
	Tensile adhesion strength	Initial: EN 1348 – Clause 8.2	≥1.0 N/mm ²	1.40 – 2.0 N/mm ²
		After Water Immersion : EN 1348 – Clause 8.3	≥1.0 N/mm ²	1.50– 1.85 N/mm ²
		Heat Ageing: EN 1348 – Clause 8.4	≥1.0 N/mm ²	1.20– 1.60 N/mm ²
		Freeze- Thaw: EN 1348 – Clause 8.5	≥1.0 N/mm ²	1.80 – 2.00 N/mm ²
		Transverse Deformation: EN12002	≥25mm <5.00mm	2.50 mm – 2.60 mm
IS 15477:2019	Tensile Adhesion	Dry Condition – Annex A (Clause 5.1)	Minimum 1.50 N/mm ²	1.70 – 1.90 N/mm ²
		Wet Condition – Annex A (Clause 5.1)	Minimum 1.00 N/mm ²	1.30– 1.50 N/mm ²
	Shear Adhesion	Dry Condition – Annex B (Clause 5.2)	Minimum 1.50 N/mm ²	1.66 – 2.00 N/mm ²
		Heat ageing– Annex B (Clause 5.2)	Minimum 1.00 N/mm ²	1.20– 1.30 N/mm ²
		Wet Condition – Annex B (Clause 5.2)	Minimum 1.00 N/mm ²	1.25– 1.50 N/mm ²
	Slip Resistance	Slip Resistance – Annex E (Clause 5.5)	≤0.50 mm	0.10-0.20 mm
	Transverse Deformation	Transverse Deformation: (Clause 5.6)	≥25mm <5.00mm	2.50 mm – 2.55 mm

EZY FIX SEF 666 ADHESIVE TECHNICAL DATA

EN 12004:C1TE

IS 15477:2019 : Type 2

STANDARD	PARAMETER	SPECIFICATIONS & STANDARDS	REQUIREMENT	TYPICAL VALUE
ANSI A118.1-1999	Open time	20 Minutes at 28 days: ANSI A118.1 Clause – 5.3	≥75 psi (0.50 Mpa)	100 – 120 psi (0.68–0.82 Mpa)
	Sag	Sag: ANSI A118.1- Clause 6.0	≤0.02 Inches (0.50 mm)	0.003 – 0.015 Inches (0.10-0.40 mm)
	Glazed wall tile shear strength	7 Days: ANSI A118.1 – Clause 7.1.2	> 200 psi (1.38Mpa)	225-280 psi (1.55-1.93 Mpa)
		7 Days Water immersion: ANSI A118.1- Clause 7.1.3	>150psi (1.03Mpa)	185-250 psi (1.28-1.73 Mpa)
	Porcelain Mosaic Tile Shear Strength	1 Day: ANSI A118.1 – Clause 7.2.2	>50psi (0.34Mpa)	100-150 psi (0.68 – 1.03 Mpa)
		7 Days: ANSI A118.1 – Clause 7.2.3	>150psi (1.03Mpa)	210-250 psi (1.45-1.73 Mpa)
		7 Days Water immersion: ANSI A118.1 – Clause 7.2.4	>100psi (0.69Mpa)	150-200 psi 1.03 – 1.37 Mpa
		28 Days: ANSI A118.1 – Clause 7.2.5	>150psi (1.03Mpa)	200-250 psi (1.37– 1.72 Mpa)
		12 Weeks: ANSI A118.1 – Clause 7.2.6	>150psi (1.03Mpa)	200-250 psi (1.38 – 1.73 Mpa)
	EN 12004 & ISO 13007	Open time	EN 1346	≥0.50 N/mm ²
Slip Resistance		EN 1308	≤0.50 mm	0.20-0.40 mm
Tensile adhesion strength		Initial: EN 1348 – Clause 8.2	≥0.50 N/mm ²	0.70 – 1.00 N/mm ²
		After Water Immersion : EN 1348 – Clause 8.3	≥0.50 N/mm ²	0.75– 1.10 N/mm ²
	Heat Ageing: EN 1348 – Clause 8.4	≥0.50 N/mm ²	0.65– 1.00 N/mm ²	
Freeze- Thaw: EN 1348 – Clause 8.5	≥0.50 N/mm ²	0.60 – 1.00 N/mm ²		
IS 15477:2019	Tensile Adhesion	Dry Condition – Annex A (Clause 5.1)	Minimum 1.00 N/mm ²	1.15 – 1.25 N/mm ²
		Wet Condition – Annex A (Clause 5.1)	Minimum 1.00 N/mm ²	1.15– 1.25 N/mm ²
	Shear Adhesion	Dry Condition – Annex B (Clause 5.2)	Minimum 1.25 N/mm ²	1.40 – 1.50 N/mm ²
		Heat ageing– Annex B (Clause 5.2)	Minimum 1.00 N/mm ²	1.10– 1.20 N/mm ²
		Wet Condition – Annex A (Clause 5.2)	Minimum 1.00 N/mm ²	1.10– 1.20 N/mm ²
	Slip Resistance	Slip Resistance – Annex E (Clause 5.5)	≤0.50 mm	0.15-0.25 mm

EZY FIX SEF 555 ADHESIVE TECHNICAL DATA

EN 12004:C1T

IS 15477:2019 :Type 1

STANDARD	PARAMETER	SPECIFICATIONS & STANDARDS	REQUIREMENT	TYPICAL VALUE
ANSI A118.1-1999	Open time	20 Minutes at 28 days: ANSI A118.1 Clause – 5.3	≥75 psi (0.50 Mpa)	100–150 psi (0.69–1.04 Mpa)
	Sag	Sag: ANSI A118.1- Clause 6.0	≤0.02 Inches (0.50 mm)	0.011 – 0.015 Inches (0.30–0.40 mm)
	Glazed wall tile shear strength	7 Days: ANSI A118.1 – Clause 7.1.2	> 200psi (1.38Mpa)	210–275 psi (1.45–1.90 Mpa)
		7 Days Water immersion: ANSI A118.1- Clause 7.1.3	>150psi (1.03Mpa)	150–180 psi (1.03–1.24 Mpa)
	Porcelain Mosaic Tile Shear Strength	1 Day: ANSI A118.1 – Clause 7.2.2	>50psi (0.34Mpa)	50 –80 psi (0.34–0.55 Mpa)
		7 Days: ANSI A118.1 – Clause 7.2.3	>150psi (1.03Mpa)	150–180 psi (1.03–1.24Mpa)
		7 Days Water immersion: ANSI A118.1 – Clause 7.2.4	>100psi (0.69Mpa)	120–150 psi (0.83–1.03 Mpa)
		28 Days: ANSI A118.1 – Clause 7.2.5	>150psi (1.03Mpa)	150–175 psi (1.03–1.20 Mpa)
		12 Weeks: ANSI A118.1 – Clause 7.2.6	>150psi (1.03Mpa)	150–175 psi (1.03–1.20 Mpa)
	EN 12004 & ISO 13007	Open time	EN 1346	≥0.50 N/mm ²
Slip Resistance		EN 1308	≤0.50 mm	0.10–0.30 mm
Tensile adhesion strength		Initial: EN 1348 – Clause 8.2	≥0.50 N/mm ²	0.50 – 0.60 N/mm ²
		After Water Immersion : EN 1348 – Clause 8.3	≥0.50 N/mm ²	0.50 – 0.60 N/mm ²
		Heat Ageing: EN 1348 – Clause 8.4	≥0.50 N/mm ²	0.50 – 0.60 N/mm ²
	Freeze- Thaw: EN 1348 – Clause 8.5	≥0.50 N/mm ²	0.50 – 0.60 N/mm ²	
IS 15477:2019	Tensile Adhesion	Dry Condition – Annex A (Clause 5.1)	Minimum 0.50 N/mm ²	0.60 – 0.80 N/mm ²
	Shear Adhesion	Dry Condition – Annex B (Clause 5.2)	Minimum 1.00 N/mm ²	1.10 – 1.20 N/mm ²
	Slip Resistance	Slip Resistance – Annex E (Clause 5.5)	≤0.50 mm	0.25–0.30 mm

EZY FIX SEF 444 ADHESIVE TECHNICAL DATA

EN 12004:C1T

IS 15477:2019 :Type 2

STANDARD	PARAMETER	SPECIFICATIONS & STANDARDS	REQUIREMENT	TYPICAL VALUE
ANSI A118.1-1999	Open time	20 Minutes at 28 days: ANSI A118.1 Clause – 5.3	≥75 psi (0.50 Mpa)	100–120 psi (0.68–0.82 Mpa)
	Sag	Sag: ANSI A118.1- Clause 6.0	≤0.02 Inches (0.50 mm)	0.003 – 0.015 Inches (0.10–0.40 mm)
	Glazed wall tile shear strength	7 Days: ANSI A118.1 – Clause 7.1.2	> 200 psi (1.38Mpa)	225–280 psi (1.55–1.93 Mpa)
		7 Days Water immersion: ANSI A118.1- Clause 7.1.3	>150psi (1.03Mpa)	185–250 psi (1.28–1.73 Mpa)
	Porcelain Mosaic Tile Shear Strength	1 Day: ANSI A118.1 – Clause 7.2.2	>50psi (0.34Mpa)	100–150 psi (0.68 – 1.03 Mpa)
		7 Days: ANSI A118.1 – Clause 7.2.3	>150psi (1.03Mpa)	210–250 psi (1.45–1.73 Mpa)
		7 Days Water immersion: ANSI A118.1 – Clause 7.2.4	>100psi (0.69Mpa)	150–200 psi (1.03 – 1.37 Mpa)
		28 Days: ANSI A118.1 – Clause 7.2.5	>150psi (1.03Mpa)	200–250 psi (1.37– 1.72 Mpa)
		12 Weeks: ANSI A118.1 – Clause 7.2.6	>150psi (1.03Mpa)	200–250 psi (1.38 – 1.73 Mpa)
	EN 12004 & ISO 13007	Open time	EN 1346	≥0.50 N/mm ²
Slip Resistance		EN 1308	≤0.50 mm	0.20–0.40 mm
Tensile adhesion strength		Initial: EN 1348 – Clause 8.2	≥0.50 N/mm ²	0.70 – 1.00 N/mm ²
		After Water Immersion : EN 1348 – Clause 8.3	≥0.50 N/mm ²	0.75– 1.10 N/mm ²
		Heat Ageing: EN 1348 – Clause 8.4	≥0.50 N/mm ²	0.65– 1.00 N/mm ²
	Freeze- Thaw: EN 1348 – Clause 8.5	≥0.50 N/mm ²	0.60 – 1.00 N/mm ²	
IS 15477:2019	Tensile Adhesion	Dry Condition – Annex A (Clause 5.1)	Minimum 1.00 N/mm ²	1.15 – 1.25 N/mm ²
		Wet Condition – Annex A (Clause 5.1)	Minimum 1.00 N/mm ²	1.15– 1.25 N/mm ²
	Shear Adhesion	Dry Condition – Annex B (Clause 5.2)	Minimum 1.25 N/mm ²	1.40 – 1.50 N/mm ²
		Heat ageing– Annex B (Clause 5.2)	Minimum 1.00 N/mm ²	1.10– 1.20 N/mm ²
		Wet Condition – Annex A (Clause 5.2)	Minimum 1.00 N/mm ²	1.10– 1.20 N/mm ²
	Slip Resistance	Slip Resistance – Annex E (Clause 5.5)	≤0.50 mm	0.15–0.25 mm

EZY FIX SEF 333 ADHESIVE TECHNICAL DATA

EN 12004:C1T

IS 15477:2019 :Type 1

STANDARD	PARAMETER	SPECIFICATIONS & STANDARDS	REQUIREMENT	TYPICAL VALUE
ANSI A118.1-1999	Open time	20 Minutes at 28 days: ANSI A118.1 Clause – 5.3	≥75 psi (0.50 Mpa)	100 – 150 psi (0.69–1.04 Mpa)
	Sag	Sag: ANSI A118.1- Clause 6.0	≤0.02 Inches (0.50 mm)	0.011 – 0.015 Inches (0.30–0.40 mm)
	Glazed wall tile shear strength	7 Days: ANSI A118.1 – Clause 7.1.2	200psi (1.38Mpa)	210– 275 psi (1.45–1.90 Mpa)
		7 Days Water immersion: ANSI A118.1- Clause 7.1.3	>150psi (1.03Mpa)	150–180 psi (1.03 Mpa–1.24 Mpa)
	Porcelain Mosaic Tile Shear Strength	1 Day: ANSI A118.1 – Clause 7.2.2	>50psi (0.34Mpa)	50 – 80 psi (0.34 Mpa–0.55 Mpa)
		7 Days: ANSI A118.1 – Clause 7.2.3	>150psi (1.03Mpa)	150–180 psi (1.03 Mpa–1.24 Mpa)
		7 Days Water immersion: ANSI A118.1 – Clause 7.2.4	>100psi (0.69Mpa)	120–150 psi (0.83 Mpa–1.03 Mpa)
		28 Days: ANSI A118.1 – Clause 7.2.5	>150psi (1.03Mpa)	150–175 psi (1.03 Mpa–1.20 Mpa)
		12 Weeks: ANSI A118.1 – Clause 7.2.6	>150psi (1.03Mpa)	150–175 psi (1.03 Mpa–1.20 Mpa)
	EN 12004 & ISO 13007	Open time	EN 1346	≥0.50 N/mm ²
Slip Resistance		EN 1308	≤0.50 mm	0.10–0.30 mm
Tensile adhesion strength		Initial: EN 1348 – Clause 8.2	≥0.50 N/mm ²	0.50 – 0.60 N/mm ²
		After Water Immersion : EN 1348 – Clause 8.3	≥0.50 N/mm ²	0.50 – 0.60 N/mm ²
		Heat Ageing: EN 1348 – Clause 8.4	≥0.50 N/mm ²	0.50 – 0.60 N/mm ²
	Freeze- Thaw: EN 1348 – Clause 8.5	≥0.50 N/mm ²	0.50 – 0.60 N/mm ²	
IS 15477:2019	Tensile Adhesion	Dry Condition – Annex A (Clause 5.1)	Minimum 0.50 N/mm ²	0.60 – 0.80 N/mm ²
	Shear Adhesion	Dry Condition – Annex B (Clause 5.2)	Minimum 1.00 N/mm ²	1.10 – 1.20 N/mm ²
	Slip Resistance	Slip Resistance – Annex E (Clause 5.5)	≤0.50 mm	0.25–0.30 mm

EZY FIX - EPOXY GROUT TECHNICAL DATA

Meet ANSI: A 118.3 , ISO 13007/EN

TECHNICAL DATA
Performance Property : Ezy Fix – Epoxy Grout Joint Filler is three conveniently packed component Hardener (Part A), Resin (Part B) ,Filler Powder (Part C) Mixing Ratio 1:2:7 .
Application Standards : Meet ANSI A 118:3, EN 12004 & ISO 13007.

ANSI Data		
TEST METHOD	REQUIREMENT	TYPICAL VALUES
Water Cleanability ANSI A118.3: Clause 5.1	>80 Minutes	85 – 115 Minutes
Initial Setting Time ANSI A118.3: Clause 5.2	>120 Minutes	210 – 265 Minutes
Service Setting Time ANSI A118.3: Clause 5.3	< 7 Days	50 hr – 72 hr
Shrinkage after 7 days : ANSI A118.3 Clause 5.3	<0.25%	< 0.9%
Sag in Vertical Joints ANSI A 118.3 Clause 5.4	No change in shape of joints	Pass/No change in shape of joints
Bond Strength to Quarry Tiles ANSI A 118.3 Clause 5.5	>1000 psi (6.87 Mpa)	1150 psi (7.92 Mpa)
Compressive Strength after 7 day ANSI A 118.3 Clause 5.6	>3500psi (24.06Mps)	7400–8000 Psi (51.02 – 55.15 Mpa)
Tensile Strength after 7 days: ANSI A118.3 Clause 5.7	> 1000 psi(6.87 Mpa)	2400–2650 psi (16.54 –18.27 Mpa)
Thermal Stock ANSI A118.3 Clause 5.8	>500psi (3.43 Mpa)	950–1050 psi (6.55 –7.23 Mpa)

The grout mortar confirms to ANSI A 118.3

ISO / EN Data		
Property / Test Method	Requirement	Typical Values
Abrasion resistance: ISO 13007– 4: Clause 4.4; EN 12808 – 2	≤ 250	Pass
Flexural strength under standard conditions: ISO 13007 – 4: Clause 4.1.3; EN 12808 – 3	≥ 30 N / mm ²	36 – 38 N / mm ²
Compressive Strength under standard conditions: ISO 13007 – 4: Clause 4.1.4; EN 12808 – 4	≥ 45 N / mm ²	50 – 52 N / mm ²
Shrinkage: ISO 13007 – 4: Clause 4.3 : EN 12808 – 4	< 1.5mm / m	0.5 – 0.7 mm / m
Water Absorption after 240 Minutes: ISO 13007 – 4: Clause 4.2; EN 12808 – 5	≤0.1 g	0.014 – 0.035 g
Chemical Resistance	See Chemical resistance chart	

The grout mortar conforms to ISO 13007 – 4 / EN 12808

TECHNICAL DATA

1. Household / Food Stuff Solutions				
Chemical	Concentration	PE	IE	SE
Coffee	NA	VG	VG	VG
Milk	NA	VG	VG	VG
Vinegar	NA	VG	VG	VG
Citrus Juice / Sauce	NA	P	G	VG
Butter	NA	VG	VG	VG
Beer	NA	VG	VG	VG
Sugar / Glucose	NA	VG	VG	VG
Vegetable Oil	NA	VG	VG	VG
Coke	NA	VG	VG	VG

PE: Prolonged Exposure; IE: Intermittent Exposure; SE: Splash Exposure; P: Poor; G: Good; VG: Very Good;
Long exposure will cause colour change

